

MEETING: REGULAR MEETING OF THE UTILITY ADVISORY COMMITTEE

DATE & TIME: Wednesday, April 24, 2024 at 5:30 PM

**LOCATION: Germantown Village Hall Board Room
N112 W17001 Mequon Road**

NOTICE: Citizens not wishing to attend the meeting personally or virtually may submit any public comments by sending an email to comments@germantownwi.gov by 4 p.m. on the day of the meeting so that it can be provided to the members of the body for their consideration.

AGENDA

- I. **CALL TO ORDER:** *This meeting has been given public notice in accordance with Section 19.83 and 19.84, Wis. Stats, in such form that will apprise the general public and news media of subject matter that is intended for consideration and action.*
- II. **ROLL CALL:**
- III. **PUBLIC COMMENTS:**
- IV. **APPROVAL OF MINUTES:**
 - A. Minutes: January 30, 2024
- V. **OLD BUSINESS:**
 - A. Ehlers Sewer Rate Study
 - B. Discussion of Proposed Update to the Sanitary Sewer Service Area
 - C. Water Utility Step Two Rates
- VI. **ADJOURNMENT:**

UPON REASONABLE NOTICE, efforts will be made to accommodate the needs of disabled individuals through appropriate aids and services. For additional information or to request this service, please contact the Village Clerk at (262)250-4745 at least 2 days prior to the meeting.

MEETING:	REGULAR MEETING OF THE UTILITY ADVISORY COMMITTEE
DATE AND TIME:	Tuesday, January 30, 2024 5:00 PM
LOCATION:	Germantown Village Hall Board Room N112 W17001 Mequon Road

MINUTES

- I. **CALL TO ORDER:** *This meeting has been given public notice in accordance with Section 19.83 and 19.84, Wis. Stats, in such form that will apprise the general public and news media of subject matter that is intended for consideration and action.*
The Utility Advisory Committee Meeting was called to order at 5:00 PM by Chairman Robert Warren.

II. **ROLL CALL:**

Present: Trustee Robert Warren, Committee Member Steve Wesolowski, Committee Member Scott Hefle, Committee Member Peter Nilles

Also Present: Village Administrator Steve Kreklow, Deputy Clerk Madeline Laufenberg, Public Works Director Matt Mortwedt

Absent: Committee Member Dan Campbell

Excused:

PUBLIC COMMENTS: Although public comments were not approved for this agenda, Chairman Robert Warren made an allowance for citizen input. The following individuals made comments:

Tom Steinbach (Hilltop Dr) spoke regarding the potential cost of new utility infrastructure. Melanie Smythe (Cedar Ln) spoke regarding committee meeting expectations. Jan Miller (Windsong Cir W) spoke regarding project financials and process transparency.

III. **APPROVAL OF MINUTES:**

A. August 16, 2023

Motion: Approve August 16, 2023 Minutes as presented

Motioned By: Scott Hefle

Seconded By: Steve Wesolowski

Yes: Chairman Robert Warren, Committee Member Scott Hefle, Committee Member

Steve Wesolowski

No: None

Abstain: Committee Member Peter Nilles

Motion (Yes 3, No 0, Abstained 1)

IV. NEW BUSINESS:

A. Report from Ehlers on the Sewer Utility Rate Study

Jon Cameron, Senior Municipal Advisor from Ehlers, presented the Village of Germantown 2024 Sewer Rate Study. Presentation included a 5-year projection of user rates, sewer utility contemplation for future capital investment, and three general scenarios for committee consideration. Chairman Warren suggested more concrete committee conversation in next meeting, with the budget and Public Works Committee Meeting schedule in consideration.

B. Update on Richfield Sewer and Water Project

Public Works Director Matt Mortwedt presented update on Richfield Sewer and Water Project and advised that same will be presented to Public Works Committee next week.

V. ADJOURNMENT:

The meeting was adjourned at 6:35 PM.

BUSINESS OF THE UTILITY ADVISORY COMMITTEE

MEETING DATE: April 24, 2024

PLACEMENT: Presentation

ITEM TITLE: Ehlers Sewer Rate Study

SUBMITTED BY: Matthew Mortwedt, Public Works Director

SUMMARY EXPLANATION:

Ehlers conducted a study of sewer rates for the Village of Germantown. They were asked to evaluate three options. Option 1 was to increase rates over a 10 year period to properly fund operations, smaller capital projects and debt fund larger capital projects. Option 2 was to decrease rates over a 5 year period with no capital projects. Finally, Option 3 was no rate increase with capital projects.

The result of their report is a recommendation for Option 1. The report recommends a 4% increase in rates in 2025 and subsequent 4% increases in 2027, 2029, 2031 and 2033. In addition, the report recommends an annual rate review process, and moving away from differential volumetric user rates for residential and non-residential customers.

ATTACHMENT:

1. Village of Germantown 2024 Final Sewer User Rate Study

RECOMMENDATION:

Advise the Public Works and Highway Committee to adopt Option 1 for sewer rates.

ACTION BY Committee:

April 19, 2024

2024 SEWER USER RATE STUDY:

Village of Germantown, WI



Prepared by:

Ehlers
N21W23350 Ridgeview Parkway
West, Suite 100
Waukesha, WI 53188

Advisors:

Jon Cameron
Senior Municipal Advisor
Peter Curtin
Fiscal Consultant

BUILDING COMMUNITIES. IT'S WHAT WE DO.



Table of Contents

Section 1 – Executive Summary2

 1.1 Introduction and Overview.....2

 1.2 Key Findings.....2

 1.3 Study Objectives.....3

 1.4 Study Purpose3

 1.5 Study Assumptions.....4

Section 2 – Recommendations4



SECTION 1 – EXECUTIVE SUMMARY

1.1 Introduction and Overview

The Village engaged Ehlers in 2023 to perform a Sewer Rate Study (the “Study”). The Sewer Utility historically has operated in a good financial position and has accumulated significant fund balance, however with significant capital improvement needs over the next 10-years and beyond, the primary goals of the study are to 1) assess the current revenues in terms of meeting their annual revenue requirement needs; 2) develop user rate recommendations that ensure user rates are fair and equitable to all customers and that the Utility remains self-sufficient to meet operating and capital expenses.

Along with the Study, the Village has engaged Ehlers to complete a long-range cash flow analysis for both utilities which develops recommendations for future rate increases required to support the Utility’s Capital Improvement Plan (“CIP”), and projected increases to the Utility’s operating budget. Lastly, the study develops recommendations about how to pay for capital projects in each year primarily through the use of existing reserves and available cashflow from user rates, while supplementing borrowing as needed. This Executive Summary identifies the findings, recognizes the methodology used, and reviews the results of the Study completed for the Village.

Within the initial request for proposal the Village asked that the Study and long-range cash flow to provide at least three rate alternatives.

- Option 1: Alternating Rate increase over a ten-year period (with capital projects).
- Option 2: Decrease rates over a five-year period (without capital projects).
- Option 3: No rate increase over a five-year period (with capital projects).

1.2 Key Findings

- The Village’s last rate increase was in 2014.
- Historically, The Village has the following percentage of total sales revenue by customer class:
 - 52% from Residential customers
 - 18% from Commercial and Institutional customers
 - 29% from Industrial customers
- All customers currently pay a quarterly service (fixed) charge based on the size of their meter and a volumetric rate of \$6.91 for Residential Customers and \$8.64 for all other customers per 1,000 gallons of billable sewer consumption. The fixed charge for a 5/8” meter is presently \$40.01 per quarter.



- The Utility has approximately \$6.3 million of planned capital improvement expenses over a 10-year planning period. It is recommended that approximately \$1.9 million of that expense be funded with a combination of available reserves and annual revenues generated through sewer user rates. Approximately \$4.4 million of the total project expenses is recommended to be debt funded in 2025 to keep the utility’s available reserves above minimum recommended levels.
- As part of the rate study process Ehlers conducted a presentation to the Utility Advisory Committee. The feedback through those meetings was to 1) try to fund capital projects with available reserves and cash to the extent possible; 2) Where necessary build projected debt issues where borrowing may be necessary; and 3) to keep user rate increases linear if possible over the 10-year planning period for both districts.
 - It is recommended that the Village Board consider Option 1 of a 4.00% increase to sewer user rates in 2025. It is further recommended that the Village consider future rate increases bi-annually as shown in the cash flow analysis contained within this report.
 - Option 2 would leave the Utility with a negative \$1 million cash balance over the planning period. In addition, the sewer utility would not be able to undertake any of the projects identified in the capital plan over that period.
 - Option 3 also leaves the utility with very limited ability to pay for projects cash on hand or debt financing. This option would also leave the cash balance several depleted, with a projected negative fund balance by 2030.
- Over the long-range planning period in Option 1, the typical residential customer at average consumption will experience a 20.00% (\$22.05) increase to their total quarterly bill at the recommended rates.

1.3 Study Objectives

The Sewer Utility is not subject to regulation from the Wisconsin Public Service Commission like the Water Utility. Therefore, when designing rates, we consider many generally accepted practices and industry standards. The subsequent guidelines were followed in completing the rate design.

- Rates should be fair and equitable to all customers.
- Rates should be easy to administer and to understand.
- Rates should be defensible.

1.4 Study Purpose

Several goals were established for the Study, including:

1. Assess financial performance trends in recent past.
2. Develop user rates at a level where the Utility is self-sufficient, meaning it is generating adequate revenues from user rates to pay for all outstanding financial obligations.
3. Develop user rates at a level where the Utility is using existing reserves for future capital projects while retaining adequate cash to maintain certain benchmarked fund balance levels.
4. Incorporate the Village’s CIP.
5. Develop a rate structure that is fair and equitable for all customer classes.



1.5 Study Assumptions

- The study develops recommended user rates based on a 2024 test year.
- The recommended rates follow the Village's existing sewer user rate structures.
- Flow projections are based on historical averages.
- After historical analysis, discussions with staff, and recent economic events no material growth assumptions were made for meter counts or flows during the planning period beyond 2024.
- Operating expenses beyond the 2024 budget were projected at 3.0% increases.

SECTION 2 – RECOMMENDATIONS

- Based on historical performance and the results of the Study, we recommend the Village adopt sewer rates for 2025 as outlined below in Option 1.
- The Village should consider using both existing reserves and revenues generated through user rates to fund smaller amounts of the capital projects while borrowing for larger projects. The analysis shows that in 2026 the Village may likely need to borrow for capital improvement needs in that year.
- The Village should implement an annual rate review process and consider the future rate increases that are outlined in the cash flow analysis for both utilities.
- The Village should strongly consider moving away from a differential volumetric user rate for residential and non-residential customers to a uniform volumetric rate per 1,000 gallons for all customers. This will help ensure that user rates are fair and equitable for all customer classes.

A summary of the recommended current and future rate changes are summarized below along with the cash flow summary for each of the Options described for the Utility.



Sewer Utility Existing and Proposed User Rates Summary

	Current	2025 Proposed
Domestic Sewer Customers		
<u>Meter Size</u>		
5/8	\$40.10	\$41.70
3/4	\$40.10	\$41.70
1	\$74.02	\$76.98
1 1/2	\$102.02	\$106.10
2	\$132.02	\$137.30
3	\$202.03	\$210.11
4	\$362.06	\$376.54
6	\$592.08	\$615.76
Residential Volumetric Rate per 1000 Gal	\$6.91	\$7.19
Other Cust. Volumetric Rate per 1000 Gal	\$8.64	\$8.99



Projected User Rate Increases Through 2033

Year	Water					Sewer					Utility Bill (Annual)	Change Over Prior Year	% of MHI (72,458)	Year	
	Increase	Water Vol. Charge ¹	Water User Charge ²	Utility Bill (Quarterly)	Change Over Prior Year	Increase	Sewer Vol. Charge ³	Sewer User Charge ³	Utility Bill (Quarterly)	Change Over Prior Year					
		Tiered	Serv. + PFP				1,000 Gal	Gen Service							
2023		4.15	21.47	\$ 61.93			6.91	40.01	\$ 107.41		\$ 677.38		0.93%	2023	
2024	9.18%	4.53	23.44	\$ 67.62	\$ 5.69	0.00%	6.91	40.01	\$ 107.41	\$ -	\$ 700.12	\$ 22.74	0.97%	2024	
2025	15.00%	5.21	26.96	\$ 77.76	\$ 10.14	4.00%	7.19	41.61	\$ 111.71	\$ 4.30	\$ 757.88	\$ 57.76	1.05%	2025	
2026	0.00%	5.21	26.96	\$ 77.76	\$ -	0.00%	7.19	41.61	\$ 111.71	\$ -	\$ 757.88	\$ -	1.05%	2026	
2027	0.00%	5.21	26.96	\$ 77.76	\$ -	4.00%	7.48	43.27	\$ 116.18	\$ 4.47	\$ 775.75	\$ 17.87	1.07%	2027	
2028	0.00%	5.21	26.96	\$ 77.76	\$ -	0.00%	7.48	43.27	\$ 116.18	\$ -	\$ 775.75	\$ -	1.07%	2028	
2029	8.00%	5.63	29.11	\$ 83.98	\$ 6.22	4.00%	7.78	45.01	\$ 120.82	\$ 4.65	\$ 819.22	\$ 43.47	1.13%	2029	
2030	0.00%	5.63	29.11	\$ 83.98	\$ -	0.00%	7.78	45.01	\$ 120.82	\$ -	\$ 819.22	\$ -	1.13%	2030	
2031	0.00%	5.63	29.11	\$ 83.98	\$ -	4.00%	8.09	46.81	\$ 125.66	\$ 4.83	\$ 838.55	\$ 19.33	1.16%	2031	
2032	0.00%	5.63	29.11	\$ 83.98	\$ -	0.00%	8.09	46.81	\$ 125.66	\$ -	\$ 838.55	\$ -	1.16%	2032	
2033	0.00%	5.63	29.11	\$ 83.98	\$ -	4.00%	8.41	48.68	\$ 130.68	\$ 5.03	\$ 858.66	\$ 20.11	1.19%	2033	
Total Change over planning period					\$ 22.05						\$ 23.27	\$ 181.28			

Notes:

1. Current water volumetric rate is \$4.15 per 1,000 kgals for the first 100,000 gallons
2. The water user charges include a quarterly service charge of \$19.35 plus a public fire protection charge of \$2.13 for a 5/8 inch meter.
3. The current Sewer volumetric rate is \$6.91 per 1,000 gallons and a service charge of \$40.01 for 5/8 inch meter.
4. The usage is assumed to be 9,750 Gallons per quarter.



Option 1: Alternating Rate increase over a ten-year period (with capital projects).

	Budget		Projected							
	2024	2025	2026	2027	2028	2029	2030	2031	2032	2033
Revenues										
Total Revenues from User Rates ¹	\$7,170,000	\$7,456,800	\$7,456,800	\$7,755,072	\$7,755,072	\$8,065,275	\$8,065,275	\$8,387,886	\$8,387,886	\$8,723,401
Percent Increase to User Rates	0.00%	4.00%	0.00%	4.00%	0.00%	4.00%	0.00%	4.00%	0.00%	4.00%
Cumulative Percent Rate Increase	0.00%	4.00%	4.00%	8.16%	8.16%	12.49%	12.49%	16.99%	16.99%	21.67%
Dollar Amount Increase to Revenues		\$286,800	\$0	\$298,272	\$0	\$310,203	\$0	\$322,611	\$0	\$335,515
Total Other Revenues	\$96,834	\$97,240	\$97,648	\$98,059	\$98,473	\$98,890	\$99,309	\$99,731	\$100,156	\$100,584
Total Revenues	\$7,266,834	\$7,554,040	\$7,554,448	\$7,853,131	\$7,853,545	\$8,164,165	\$8,164,584	\$8,487,617	\$8,488,042	\$8,823,985
Less: Expenses										
Operating and Maintenance	\$6,305,754	\$6,431,869	\$6,560,506	\$6,691,716	\$6,825,551	\$6,962,062	\$7,101,303	\$7,243,329	\$7,388,196	\$7,535,960
Net Before Debt Service and Capital Expenditures	\$961,080	\$1,122,171	\$993,942	\$1,161,415	\$1,027,995	\$1,202,103	\$1,063,281	\$1,244,288	\$1,099,846	\$1,288,026
Debt Service										
Existing Debt P&I	\$575,181	\$531,656	\$533,556	\$529,881	\$531,331	\$532,806	\$534,194	\$535,513	\$531,178	\$531,188
New (2024-2033) Debt Service P&I	\$0	\$117,713	\$85,838	\$276,788	\$380,450	\$375,975	\$371,300	\$366,288	\$365,825	\$359,800
Total Debt Service	\$575,181	\$649,369	\$619,394	\$806,669	\$911,781	\$908,781	\$905,494	\$901,800	\$897,003	\$890,988
Transfer In (Out)	\$230,000	\$230,000	\$230,000	\$230,000	\$230,000	\$230,000	\$230,000	\$230,000	\$230,000	\$230,000
Less: Capital Improvements	\$788,500	\$685,000	\$2,405,000	\$1,305,000	\$500,000	\$500,000	\$500,000	\$500,000	\$500,000	\$500,000
Debt Issued/Grants/Aid	\$0	\$0	\$2,500,000	\$1,380,000	\$0	\$0	\$0	\$0	\$0	\$0
Net Annual Cash Flow	(\$172,601)	\$17,802	\$699,548	\$659,746	(\$153,787)	\$23,322	(\$112,213)	\$72,488	(\$67,157)	\$127,038
Restricted and Unrestricted Cash Balance:										
Balance at first of year	\$4,569,209	\$4,396,608	\$4,414,410	\$5,113,958	\$5,773,704	\$5,619,917	\$5,643,239	\$5,531,027	\$5,603,515	\$5,536,358
Net Annual Cash Flow Addition/(subtraction)	(\$172,601)	\$17,802	\$699,548	\$659,746	(\$153,787)	\$23,322	(\$112,213)	\$72,488	(\$67,157)	\$127,038
Balance at end of year	\$4,396,608	\$4,414,410	\$5,113,958	\$5,773,704	\$5,619,917	\$5,643,239	\$5,531,027	\$5,603,515	\$5,536,358	\$5,663,396
Over/Under Minimum Balance Req.	\$67,308	\$27,409	\$436,240	\$904,714	\$676,390	\$624,098	\$435,285	\$430,855	\$286,551	\$331,261
Over/Under Targeted Moody's Min. Bal. Req.	82	78	112	143	129	125	114	112	104	105



Option 2: Decrease rates over a five-year period (without capital projects).

	Budget	Projected								
	2024	2025	2026	2027	2028	2029	2030	2031	2032	2033
Revenues										
Total Revenues from User Rates ¹	\$7,170,000	\$6,954,900	\$6,746,253	\$6,543,865	\$6,347,549	\$6,347,549	\$6,347,549	\$6,347,549	\$6,347,549	\$6,347,549
Percent Increase to User Rates	-3.00%	-3.00%	-3.00%	-3.00%	-3.00%	0.00%	0.00%	0.00%	0.00%	0.00%
Cumulative Percent Rate Increase	-3.00%	-5.91%	-8.73%	-11.47%	-14.13%	-14.13%	-14.13%	-14.13%	-14.13%	-14.13%
Dollar Amount Increase to Revenues		-\$215,100	-\$208,647	-\$202,388	-\$196,316	\$0	\$0	\$0	\$0	\$0
Total Other Revenues	\$96,834	\$97,240	\$97,648	\$98,059	\$98,473	\$98,890	\$99,309	\$99,731	\$100,156	\$100,584
Total Revenues	\$7,266,834	\$7,052,140	\$6,843,901	\$6,641,925	\$6,446,023	\$6,446,439	\$6,446,859	\$6,447,281	\$6,447,706	\$6,448,133
Less: Expenses										
Operating and Maintenance	\$6,305,754	\$6,431,869	\$6,560,506	\$6,691,716	\$6,825,551	\$6,962,062	\$7,101,303	\$7,243,329	\$7,388,196	\$7,535,960
Net Before Debt Service and Capital Expenditures	\$961,080	\$620,271	\$283,395	(\$49,792)	(\$379,528)	(\$515,622)	(\$654,444)	(\$796,048)	(\$940,490)	(\$1,087,826)
Debt Service										
Existing Debt P&I	\$575,181	\$531,656	\$533,556	\$529,881	\$531,331	\$532,806	\$534,194	\$535,513	\$531,178	\$531,188
New (2024-2033) Debt Service P&I	\$0	\$0	\$0	\$0	\$0	\$0	\$0	\$0	\$0	\$0
Total Debt Service	\$575,181	\$531,656	\$533,556	\$529,881	\$531,331	\$532,806	\$534,194	\$535,513	\$531,178	\$531,188
Transfer In (Out)	\$230,000	\$230,000	\$230,000	\$230,000	\$230,000	\$230,000	\$230,000	\$230,000	\$230,000	\$230,000
Less: Capital Improvements	\$0	\$0	\$0	\$0	\$0	\$0	\$0	\$0	\$0	\$0
Debt Issued/Grants/Aid	\$0	\$0	\$0	\$0	\$0	\$0	\$0	\$0	\$0	\$0
Net Annual Cash Flow	\$615,899	\$318,615	(\$20,161)	(\$349,673)	(\$680,859)	(\$818,429)	(\$958,638)	(\$1,101,561)	(\$1,241,668)	(\$1,389,014)
Restricted and Unrestricted Cash Balance:										
Balance at first of year	\$4,569,209	\$5,185,108	\$5,503,722	\$5,483,561	\$5,133,888	\$4,453,029	\$3,634,600	\$2,675,962	\$1,574,401	\$332,733
Net Annual Cash Flow Addition/(subtraction)	\$615,899	\$318,615	(\$20,161)	(\$349,673)	(\$680,859)	(\$818,429)	(\$958,638)	(\$1,101,561)	(\$1,241,668)	(\$1,389,014)
Balance at end of year	\$5,185,108	\$5,503,722	\$5,483,561	\$5,133,888	\$4,453,029	\$3,634,600	\$2,675,962	\$1,574,401	\$332,733	(\$1,056,281)



Option 3: No rate increase over a five-year period (with capital projects).

	Budget		Projected							
	2024	2025	2026	2027	2028	2029	2030	2031	2032	2033
Revenues										
Total Revenues from User Rates ¹	\$7,170,000	\$7,170,000	\$7,170,000	\$7,170,000	\$7,170,000	\$7,170,000	\$7,170,000	\$7,170,000	\$7,170,000	\$7,170,000
Percent Increase to User Rates	0.00%	0.00%	0.00%	0.00%	0.00%	0.00%	0.00%	0.00%	0.00%	0.00%
Cumulative Percent Rate Increase	0.00%	0.00%	0.00%	0.00%	0.00%	0.00%	0.00%	0.00%	0.00%	0.00%
Dollar Amount Increase to Revenues		\$0	\$0	\$0	\$0	\$0	\$0	\$0	\$0	\$0
Total Other Revenues	\$96,834	\$97,240	\$97,648	\$98,059	\$98,473	\$98,890	\$99,309	\$99,731	\$100,156	\$100,584
Total Revenues	\$7,266,834	\$7,267,240	\$7,267,648	\$7,268,059	\$7,268,473	\$7,268,890	\$7,269,309	\$7,269,731	\$7,270,156	\$7,270,584
Less: Expenses										
Operating and Maintenance	\$6,305,754	\$6,431,869	\$6,560,506	\$6,691,716	\$6,825,551	\$6,962,062	\$7,101,303	\$7,243,329	\$7,388,196	\$7,535,960
Net Before Debt Service and Capital Expenditures	\$961,080	\$835,371	\$707,142	\$576,343	\$442,923	\$306,828	\$168,006	\$26,402	(\$118,039)	(\$265,376)
Debt Service										
Existing Debt P&I	\$575,181	\$531,656	\$533,556	\$529,881	\$531,331	\$532,806	\$534,194	\$535,513	\$531,178	\$531,188
New (2024-2033) Debt Service P&I	\$0	\$0	\$0	\$0	\$0	\$0	\$0	\$0	\$0	\$0
Total Debt Service	\$575,181	\$531,656	\$533,556	\$529,881	\$531,331	\$532,806	\$534,194	\$535,513	\$531,178	\$531,188
Transfer In (Out)	\$230,000	\$230,000	\$230,000	\$230,000	\$230,000	\$230,000	\$230,000	\$230,000	\$230,000	\$230,000
Less: Capital Improvements	\$788,500	\$685,000	\$2,405,000	\$1,305,000	\$500,000	\$500,000	\$500,000	\$500,000	\$500,000	\$500,000
Debt Issued/Grants/Aid	\$0	\$0	\$0	\$0	\$0	\$0	\$0	\$0	\$0	\$0
Net Annual Cash Flow	(\$172,601)	(\$151,285)	(\$2,001,414)	(\$1,028,538)	(\$358,409)	(\$495,978)	(\$636,188)	(\$779,110)	(\$919,218)	(\$1,066,563)
Restricted and Unrestricted Cash Balance:										
Balance at first of year	\$4,569,209	\$4,396,608	\$4,245,322	\$2,243,908	\$1,215,370	\$856,961	\$360,983	(\$275,205)	(\$1,054,315)	(\$1,973,532)
Net Annual Cash Flow Addition/(subtraction)	(\$172,601)	(\$151,285)	(\$2,001,414)	(\$1,028,538)	(\$358,409)	(\$495,978)	(\$636,188)	(\$779,110)	(\$919,218)	(\$1,066,563)
Balance at end of year	\$4,396,608	\$4,245,322	\$2,243,908	\$1,215,370	\$856,961	\$360,983	(\$275,205)	(\$1,054,315)	(\$1,973,532)	(\$3,040,096)

BUSINESS OF THE UTILITY ADVISORY COMMITTEE

MEETING DATE: April 24, 2024

PLACEMENT: Presentation

ITEM TITLE: Discussion of Proposed Update to the Sanitary Sewer Service Area

SUBMITTED BY: Matthew Mortwedt, Public Works Director

SUMMARY EXPLANATION:

SEWRPC is conducting an update to Germantown's Sanitary Sewer Service Area (SSSA). Due to limited staff at SEWRPC the process for smaller development-by-development amendments to the SSSA's is now very lengthy and can hinder progress. They are recommending that the Village adopt a more comprehensive approach and look at creating a SSSA that incorporates growth that is likely to happen in a 10-20 year window. Staff developed the attached exhibit with the following criteria:

1. Adherence to anticipated land use in the 2050 Comprehensive Plan
2. Current ownership
3. Feasibility of serving the area (or not) with sewer
4. Existing non-public sanitary systems

ATTACHMENT:

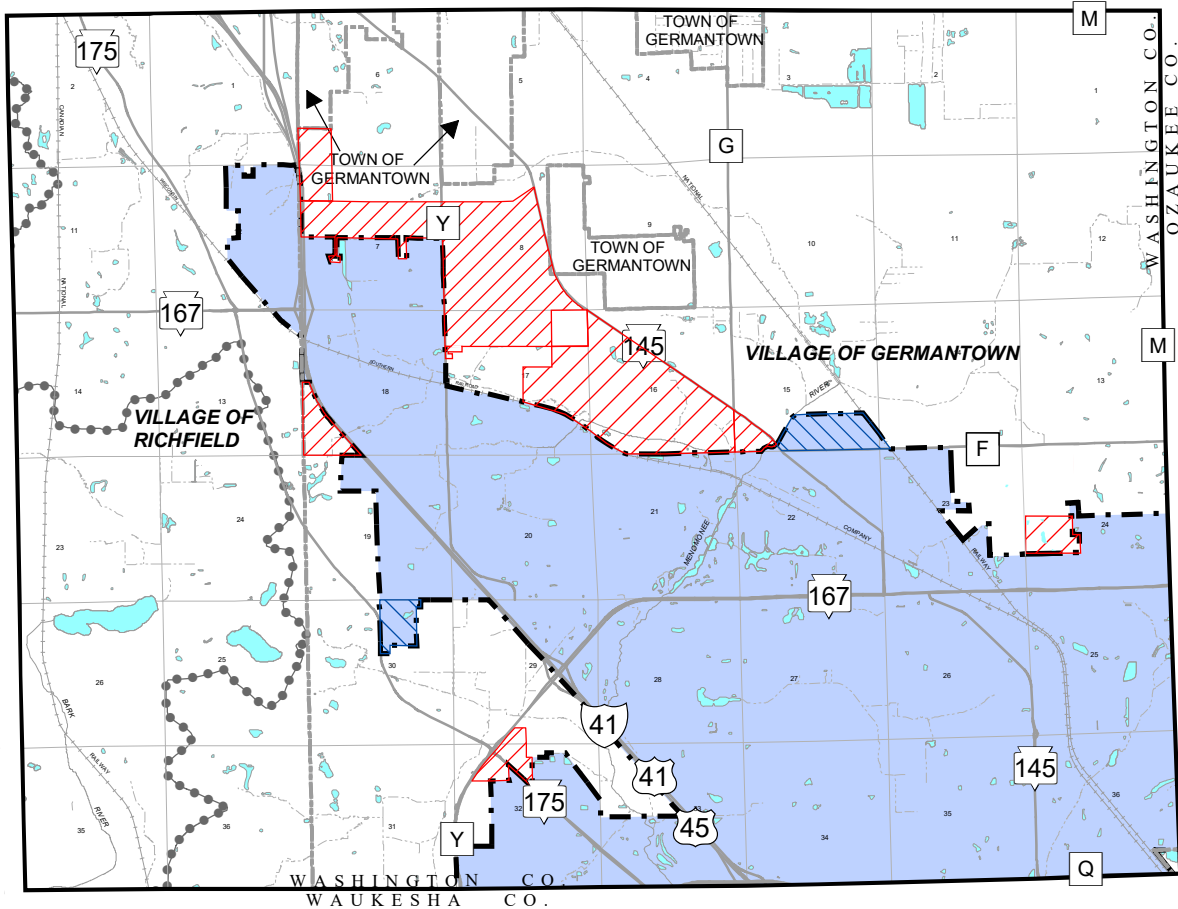
1. Map_1_GermantownSSA (1) (1)

RECOMMENDATION:

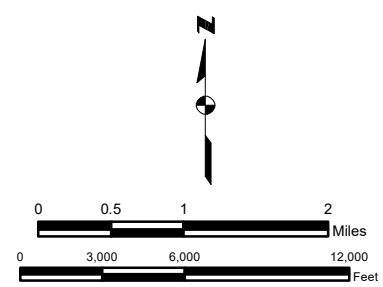
Make a recommendation on the proposed SSSA to the PWHC.

ACTION BY Committee:

**Map 2.1
Proposed Changes to the Village of Germantown Sanitary Sewer Service Area**



- VILLAGE OF GERMANTOWN PLANNED SANITARY SEWER SERVICE AREA
- PLANNED SANITARY SEWER SERVICE AREA BOUNDARY
- AREA TO BE ADDED TO THE VILLAGE OF GERMANTOWN SEWER SERVICE AREA
- AREA TO BE REMOVED FROM THE VILLAGE OF GERMANTOWN SEWER SERVICE AREA
- EXISTING MUNICIPAL BOUNDARIES: 2023
- SUBCONTINENTAL DIVIDE



Source: Southeastern Wisconsin Regional Planning Commission

BUSINESS OF THE UTILITY ADVISORY COMMITTEE

MEETING DATE: April 24, 2024

PLACEMENT: Presentation

ITEM TITLE: Water Utility Step Two Rates

SUBMITTED BY: Matthew Mortwedt, Public Works Director

SUMMARY EXPLANATION:

The Public Service Commission, as part of the Village of Germantown's latest rate case (PSC Docket 2210-WR-106), approved a two-step water rate increase. The first increase has already been implemented. The Step II rates would result in an approximate 9.81 percent increase over the current rates to a single family residential customer's bill. Including the first increase, that amounts to approximately an 83.09 percent increase.

Step II rates are authorized to begin once the Goldendale Booster Station and Tower 4 are in service. Attached are the most recent schedules for those projects. Both are indicating that they will be online in 2024 with Step II rates to be implemented the following quarter.

ATTACHMENT:

1. PSC Docket 2210-WR-106
2. Germantown - Goldendale Booster Station - Project Schedule 04.03.24
3. Germantown - Tower 4 - Project Schedule 2-6-24
4. WaterBillComparison 240422

RECOMMENDATION:

This item is informational only.

ACTION BY Committee:

<p>SERVICE DATE Oct 05, 2021</p>
--

PUBLIC SERVICE COMMISSION OF WISCONSIN

Application of the Village of Germantown, Washington County,
Wisconsin, as a Water Public Utility, for Authority to Adjust Water
Rates

2210-WR-106

FINAL DECISION

This is the Final Decision in the Class 1 proceeding conducted by the Public Service Commission (Commission) on the application of Germantown Water Utility (applicant) for approval to increase water rates. This application is APPROVED, subject to conditions.

Introduction

The applicant applied to the Commission on September 4, 2020 for authority to increase water rates. Pursuant to due notice, the Commission held an audiovisual hearing on September 9, 2021 before Administrative Law Judge Michael E. Newmark. The parties, for purposes of review under Wis. Stat. §§ 227.47 and 227.53, are listed in Appendix A. The applicant is the only party to this proceeding.

Findings of Fact

1. The applicant's presently authorized rates for water utility service will produce operating revenues of \$2,362,071 for the 2021 test year. These rates fall short of the test year revenue needed by \$1,154,066 for Step I and by \$1,411,009 for Step II and are unreasonable.
2. The estimated net investment rate base applicable to water utility operations for the 2021 test year in Step I is \$15,950,547 and in Step II is \$18,844,479.

3. The rate changes set forth for water service in Appendix C will permit the applicant to earn the necessary revenue requirement and are consistent with the cost of service and rate design.

Conclusions of Law

1. The applicant is a municipal public utility as defined in Wis. Stat. § 196.01(5)(a).
2. The Commission has authority under Wis. Stat. §§ 196.02(1), 196.03(1) and (3), 196.19, 196.20, 196.22, 196.37(1), (2), and (3), and 196.395 to authorize the applicant to increase water utility rates and revise tariff provisions.

3. The Commission has authority under Wis. Stat. § 15.02(4) to delegate to the Administrator of the Division of Water Utility Regulation and Analysis (Division Administrator) those functions vested by law as enumerated above and has delegated the authority to issue this Final Decision to the Division Administrator.

Opinion

Net Investment Rate Base

The estimated net investment rate base for the 2021 test year is as follows:

STEP I

Utility Financed Plant in Service	\$23,400,986
Less: Accumulated Provision for Depreciation	<u>\$7,130,960</u>
Net Plant in Service	\$16,270,026
Plus: Materials and Supplies	0
Less: Regulatory Liability for Pre-2003 Accumulated Depreciation - CIAC	<u>319,479</u>
Net Investment Rate Base	<u>\$15,950,547</u>

STEP II

Utility Financed Plant in Service	\$26,363,386
Less: Accumulated Provision for Depreciation	<u>7,199,428</u>
Net Plant in Service	\$19,163,958
Plus: Materials and Supplies	0
Less: Regulatory Liability for Pre-2003 Accumulated Depreciation - CIAC	<u>319,479</u>
Net Investment Rate Base	<u>\$18,844,479</u>

Comparative Income Statement

Commission staff submitted a revenue requirement for the test year as shown in Ex.-PSC-Revenue Requirement. ([PSC REF#: 410638.](#)) The estimated Step I and Step II test year income statement showing the effect of the increase in revenue that will result from authorized rates is as follows:

STEP I

	<u>At Present Rates</u>	<u>Authorized Increase</u>	<u>After Rate Increase</u>
Operating Revenues	\$2,362,071	\$1,154,066	\$3,516,137
Operating Expenses:			
Oper. & Maint. Exp.	\$1,483,954		\$1,483,954
Depreciation	553,848		553,848
Taxes & Tax Equiv.	<u>696,758</u>		<u>696,758</u>
Total Oper. Expenses	<u>\$2,734,560</u>		<u>\$2,734,560</u>
Oper. Income (or Loss)	<u>(\$372,489)</u>		<u>\$781,577</u>
Rate of Return	NA		4.90%

STEP II

	<u>At Present Rates</u>	<u>Authorized Increase</u>	<u>After Rate Increase</u>
Operating Revenues	\$2,362,071	\$1,411,009	\$3,773,080
Operating Expenses:			
Oper. & Maint. Exp.	\$1,483,954		\$1,483,954
Depreciation	622,316		622,316
Taxes & Tax Equiv.	<u>743,431</u>		<u>743,431</u>
Total Oper. Expenses	<u>\$2,849,701</u>		<u>\$2,849,701</u>
Oper. Income (or Loss)	<u>(\$487,630)</u>		<u>\$923,379</u>
Rate of Return	NA		4.90%

Step II rates include costs associated with the applicant’s construction of an elevated tank and booster station authorized by the Commission in docket 2210-CW-109. Commission staff computed the depreciation expense included in the Step I and Step II revenue requirement for the 2021 test year using the depreciation rates shown in Appendix E. For purposes of computing the depreciation expense on the average investment for each plant account, these depreciation rates are effective as of January 1, 2021.

In Ex.-PSC-Revenue Requirement, Commission staff recommended that the applicant complete adjustments and update its most recent PSC Annual Report prior to the hearing. At the hearing, Commission staff confirmed that the applicant fulfilled these requirements.

Capital Structure

The applicant requested a return on net investment rate base of 5.00 percent. The Commission calculates the benchmark rate of return weekly based on a three-month rolling average of municipal bond rates, with a floor determined annually. The benchmark rate of return

Docket 2210-WR-106

was 4.90 percent at the time Commission staff finalized Ex.-PSC-Revenue Requirement for this case.

For both Step I and Step II, Commission staff estimated the applicant's capital employed in providing public utility service that is associated with the net investment rate base to be 96.03 percent municipal equity and 3.97 percent long-term debt. The composite cost of debt is 2.88 percent. A return on rate base of 4.90 percent will provide a 4.98 percent return on municipal earning equity and adequate times interest coverage. The 4.9 percent return on rate base will provide the municipality with sufficient earnings on its investment. This return on rate base will also maintain confidence in the applicant's financial integrity without resulting in customer rates that are excessive.

Cost of Service

Commission staff submitted for the record an analysis of the cost of supplying water for general service and for public fire protection (PFP) service in Ex.-PSC-COSS and Rate Design. ([PSC REF#: 418650.](#)) Commission staff used the base-extra capacity cost allocation method for the analysis. This method allocates the operating expenses first to the service cost functional components of base, customer, extra-capacity maximum-day and extra-capacity maximum-hour demand, and fire protection and then to each of the customer classes served. Commission staff provided summaries of these analyses in Schedules 8 and 11 in Step I and Step II of Ex.-PSC-COSS and Rate Design. Appendix B shows customer class revenue requirements resulting from the cost analysis compared with revenues at authorized rates.

Rates

Water service rates authorized in this decision will result in a Step I estimated net operating income of approximately \$781,577, which provides a 4.90 percent return on the water utility net investment rate base of \$15,950,547. The authorized water service rates will also result in a Step II estimated net operating income of approximately \$923,379, which provides a 4.90 percent return on the water utility net investment rate base of \$18,844,479. Commission staff provided the applicant with Commission staff's proposed rates for review prior to the hearing, and the applicant had no objection to these rates.

As shown in attached Appendix B, the base-extra capacity cost allocation method results in a relatively wide range of increases in the charges to the various general service customer classes to reflect the cost of providing service to such classes. The percentage rate increase to any individual customer will not necessarily equal the overall percentage increase to the associated customer class, but rather will depend on the specific water use of that customer.

The authorized rates as set forth in Appendix C are based on the cost of providing service to various customer classes or types of service. All customers will be required to pay an appropriate amount for the service provided.

Commission staff computed some typical water bills for single family residential, multifamily residential, commercial, industrial, and public authority customers using Schedule Mg-1 to compare present rates with the new Step I and Step II rates. That comparison is set forth in Appendix D.

The authorized rates for Step I shown in Appendix C would increase annual revenues from water public utility service by an estimated \$1,154,066, of which \$1,092,857 would be from general service customers, and \$61,209 would be from PFP charges.

Overall, the Step I increase in annual revenues is 53.98 percent and is comprised of a 68.27 percent increase in general service charges and an 11.39 percent increase in PFP charges. Rates have risen due to construction and replacement of water mains, service lines, meters, and hydrants and an increase in operating expenses since the applicant's last conventional rate case in 2010. A typical single family residential customer's bill, including public fire protection, will rise 66.74 percent after the applicant implements the Step I rates. Commission staff provided analysis of customer bills for comparison of proposed and present rates (see Step I of Appendix D.)

The authorized rates for Step II shown in Appendix C would increase annual revenues from water public utility service by an estimated \$1,411,009, of which \$1,265,064 would be from general service customers, and \$145,945 would be from the PFP charge.

The Step II rates include the Step I increase. Overall, the Step II increase would result in a 65.99 percent increase in customer rates and is comprised of a 79.03 percent increase in general service charges and a 27.16 percent increase in PFP charges. A typical single family residential customer's water bill will rise 83.09 percent, including PFP, after Step II is implemented. That same customer will see an increase of 9.81 percent from Step I to Step II. Commission staff provided analysis of customer bills for comparison of proposed and present rates (see Step II of Appendix D).

Docket 2210-WR-106

The overall increase would change from \$1,154,066 to \$1,411,009 from Step I to Step II. The Step II increase in gross plant investment is due to addition of the elevated tank and booster station authorized in docket 2210-CW-109. The Step II rates approved in this docket shall be effective when the applicant notifies the Commission in writing that construction of the elevated tank and booster station authorized in docket 2210-CW-109 is complete, and the infrastructure is in service.

The applicant currently collects \$537,429 annually from the Village of Germantown for PFP. This charge recovers all the applicant's costs associated with the additional storage, pumping, and distribution required to provide the high flows and pressures needed to fight fires. The Village collects the funds for the current municipal PFP charge of \$537,429 from property taxes and pays this charge to the applicant.

In its application, the applicant proposed changing the method of recovering the PFP charge from the current 100 percent municipal charge to a combination of a municipal PFP charge and direct PFP charges that the applicant would collect directly from water utility customers. The applicant requested the PFP charges be based on the Equivalent Meters Method. This change in the method of recovering the PFP charge will allow for the collection of PFP charges from property owners who are not subject to property taxes. The applicant does not intend to charge non-general service customers. This request conforms with Wis. Stat. § 196.03(3)(b), which provides municipalities the option to include the PFP charges directly in the water utility bills of general service customers. The Village adopted a resolution authorizing the change to the applicant's PFP methodology. The resolution stated that the applicant would charge \$537,000 of the total amount of PFP revenue required to the Village as a municipal

Docket 2210-WR-106

charge, and charge the remainder directly to retail general service customers. ([PSC REF#: 418019](#).) While the Commission finds it reasonable to authorize rates as set forth in Appendix C, Schedule F-1, which provide for the applicant to charge PFP costs directly to general service customers, the Commission notes that the Village did not finalize its PFP methodology until July 19, 2021, which created significant delays in processing this case. The Commission recommends the applicant wait to file an application for a CRC in the future until it can provide information that local decisions related to rates have been finalized.

After Step II is implemented, the annual PFP charge will increase by 27.16 percent, compared to 79.03 percent for general service charges. The larger increase in general service charges results from a greater proportion of the annual operating costs being allocated to general service compared to what was allocated at the time of the applicant's last rate proceeding and is based on current ratios of maximum general service demand to available system fire protection capacity. The larger increase in general service charges is reasonable, in that it reflects the cost of providing service appropriately.

The applicant agreed to revise its tariff provisions (operating rules and main extension rules) to be consistent with those of other Wisconsin water utilities. The Commission incorporated the proposed rules into the record by receipt of Ex.-PSC-COSS and Rate Design, which incorporates the rules by reference. They are in accordance with Commission policy and the Wisconsin Administrative Code.

Continuing Property Records

In 2001, the applicant reclassified from a Class C to a Class AB utility. Pursuant to Wis. Admin. Code § PSC 185.43(2), Class AB utilities are required to institute a perpetual inventory

of their assets known as continuing property records (CPR) in accordance with the Uniform System of Accounts (USOA). CPR requirements include: (a) The system shall be arranged by plant accounts as prescribed by the USOA; (b) All property units shall be described in sufficient detail to permit their identification and shall have the location information to allow verification of their physical existence; (c) All property units shall be identified with construction costs to establish their original cost for capitalization and retirement accounting; (d) The age and service life of property units shall be calculable for depreciation studies; the original cost, description, and age of the property unit at retirement shall be converted into mortality records and permanently retained; (e) Source documents supporting the original cost and quantities of property units shall be preserved for a period of 6 years after the plant is retired; and (f) Maps may be part of the CPR if they contain a description of the unit, its location, and the year of its construction.

During its review of this rate case, Commission staff noted that the applicant had not fully developed its CPR. The Commission finds it reasonable for the applicant to complete the required CPR in a form that meets all the requirements listed above to the satisfaction of the Commission or Commission staff within 24 months of the date of this Final Decision. To ensure the applicant makes progress on the CPR, the Commission also finds it reasonable to require the applicant to report to the Commission in writing on the its progress towards completion of the CPR, within three months of the date of this Final Decision and every six months thereafter until the applicant completes its CPR. The CPR shall:

- Include records for locational assets and mass unit assets;
- Identify and describe each locational asset;

- Show the total construction cost of the asset, the date of construction, and a breakdown of the locational asset into appropriate USOA categories;
- Provide a summary of the mass units broken down by unit type (i.e., water mains, valves, hydrants, service, meters, etc.) and list the mass units by size, date of installation, and construction cost;
- Distinguish Contributed Plant from Utility Financed Plant; and,
- Unless demonstrated by the applicant and determined by Commission staff to be impracticable, integrate the Village of Germantown's GIS mapping records into the CPR.

Public Comments

Twenty-one water customers filed comments on the Commission's Electronic Records Filing (ERF) system concerning the rate increase. Commission staff compiled all the comments in Ex.-PSC-Public Comment. ([PSC REF#: 420808.](#)) Approximately 20 water customers also logged into the audiovisual hearing, and six of them provided comment during the hearing. These customers expressed concern over the magnitude of the increase and its impact on customers. Several customers questioned why the applicant had waited so long between rate cases, which would have helped spread the rate increase over several years compared to the large increase in this proceeding.

At the public hearing, the applicant's representatives addressed the reasons for the rate increase. The applicant explained that the driver of the increase is to provide additional funding to replace aging infrastructure. The applicant stated that existing revenue is not adequate to fund system improvements caused by significant growth in the Village over the last several decades, and is not adequate to replace original infrastructure that is failing more frequently and nears the

Docket 2210-WR-106

end of its service life. The applicant also mentioned that the rate increase will help fund new infrastructure, including the new water tower and booster station that the Commission authorized in docket 2210-CW-109. The applicant stated this infrastructure will provide necessary water pressures in a growing area of the Village and could potentially supply water to a neighboring Village in the future. The applicant stated that the Village Board agreed with the revenue increase outlined in Ex.-PSC-Revenue Requirement and also agreed to change the method of recovery for PFP charges from a 100 percent municipal charge to a combination of municipal and direct charges.

The Commission appreciates the customers' concerns. However, the Commission finds that the revenue resulting from the authorized rates is necessary to provide for the applicant's financial needs over the long term. The Commission further concludes that the rates as proposed by Commission staff would provide a reasonable and nondiscriminatory recovery of the revenue requirement. Accordingly, the Commission approves Commission staff's proposed rates as shown in Ex.-PSC-COSS and Rate Design of the hearing record. The Commission encourages the applicant to use its finalized CPR to inform its capital planning and evaluate options for addressing future infrastructure and operating needs with more frequent, smaller rate increases.

Effective Date

The test year commenced on January 1, 2021. Pursuant to Wis. Stat. § 196.19, the changes in rates and tariff provisions that are authorized in this Final Decision take effect no sooner than one day after the date of service, provided that these rates and tariff provisions are filed with the Commission, and the applicant makes a copy of the new rates available to the public before this date by placing a copy of the new rates at locations where customer payments

are accepted, on the applicant's website, or in a form and place that is otherwise readily accessible to the public.

Order

1. This Final Decision takes effect one day after the date of service.
2. The authorized rate increases and tariff provisions shall take effect no sooner than one day after the day the applicant has: (a) filed these rates and tariff provisions with the Commission; and (b) made them available to the public at locations where customer payments are accepted, on the applicant's website, or in a form and place that is otherwise readily accessible to the public, pursuant to Wis. Stat. § 196.19 and Wis. Admin. Code § PSC 185.33(1)(f). If a copy of the new rates and tariff provisions is not made available to the public when they are filed with the Commission, the new rates and tariff provisions shall take effect one day after the day they are made available to the public.
3. The Step I rates approved in this docket shall take effect no later than 90 days from the service date of this Final Decision or as directed by the Commission or Commission staff.
4. The Step II rates approved in this docket shall be effective after the applicant has informed the Commission, in writing, that the elevated tank and booster station authorized by the Commission in docket 2210-CW-109 are complete and placed in service.
5. The applicant shall meet the requirements of Wis. Admin. Code § PSC 185.43(2) by completing a CPR no later than 24 months from the date of this Final Decision.

Docket 2210-WR-106

6. Within three months of the date of this Final Decision and every six months thereafter until the completion of Order Point No. 5, the applicant shall report to the Commission in writing on the applicant's progress towards completion of the CPR.

7. Jurisdiction is retained.

Dated at Madison, Wisconsin, October 5, 2021.

For the Commission:

A handwritten signature in black ink, appearing to read "Denise L. Schmidt". The signature is written in a cursive style with a large initial "D".

Denise L. Schmidt
Administrator
Division of Water Utility Regulation and Analysis

DLS:alf:krl DL:01831588

See attached Notice of Appeal Rights

PUBLIC SERVICE COMMISSION OF WISCONSIN
4822 Madison Yards Way
P.O. Box 7854
Madison, Wisconsin 53707-7854

**NOTICE OF RIGHTS FOR REHEARING OR JUDICIAL REVIEW, THE
TIMES ALLOWED FOR EACH, AND THE IDENTIFICATION OF THE
PARTY TO BE NAMED AS RESPONDENT**

The following notice is served on you as part of the Commission's written decision. This general notice is for the purpose of ensuring compliance with Wis. Stat. § 227.48(2), and does not constitute a conclusion or admission that any particular party or person is necessarily aggrieved or that any particular decision or order is final or judicially reviewable.

PETITION FOR REHEARING

If this decision is an order following a contested case proceeding as defined in Wis. Stat. § 227.01(3), a person aggrieved by the decision has a right to petition the Commission for rehearing within 20 days of the date of service of this decision, as provided in Wis. Stat. § 227.49. The date of service is shown on the first page. If there is no date on the first page, the date of service is shown immediately above the signature line. The petition for rehearing must be filed with the Public Service Commission of Wisconsin and served on the parties. An appeal of this decision may also be taken directly to circuit court through the filing of a petition for judicial review. It is not necessary to first petition for rehearing.

PETITION FOR JUDICIAL REVIEW

A person aggrieved by this decision has a right to petition for judicial review as provided in Wis. Stat. § 227.53. In a contested case, the petition must be filed in circuit court and served upon the Public Service Commission of Wisconsin within 30 days of the date of service of this decision if there has been no petition for rehearing. If a timely petition for rehearing has been filed, the petition for judicial review must be filed within 30 days of the date of service of the order finally disposing of the petition for rehearing, or within 30 days after the final disposition of the petition for rehearing by operation of law pursuant to Wis. Stat. § 227.49(5), whichever is sooner. If an *untimely* petition for rehearing is filed, the 30-day period to petition for judicial review commences the date the Commission serves its original decision.¹ The Public Service Commission of Wisconsin must be named as respondent in the petition for judicial review.

If this decision is an order denying rehearing, a person aggrieved who wishes to appeal must seek judicial review rather than rehearing. A second petition for rehearing is not permitted.

Revised: March 27, 2013

¹ See *Currier v. Wisconsin Dep't of Revenue*, 2006 WI App 12, 288 Wis. 2d 693, 709 N.W.2d 520.

CONTACT LIST FOR SERVICE BY PARTIES

PUBLIC SERVICE COMMISSION OF WISCONSIN

(Not a party but must be served per Wis. Stat. § 227.53)

KARA KOONCE; ANDREW FISHER

4822 MADISON YARDS WAY

PO BOX 7854

MADISON, WI 53707

KARA.KOONCE@WISCONSIN.GOV; ANDREW.FISHER@WISCONSIN.GOV

GERMANTOWN WATER UTILITY

LARRY RATAYCZAK; STEVE KREKLOW

PO BOX 337

GERMANTOWN WI 53022-0337

USA

LRATAYCZAK@VILLAGE.GERMANTOWN.WI.US;

SKREKLOW@VILLAGE.GERMANTOWN.WI.US

**Germantown Water Utility - Step I
Comparison of Revenue
at
Present Rates, Cost of Service and Authorized Rates**

<u>Customer Class</u>	<u>Revenue at Present Rates</u>	<u>Cost of Service</u>		<u>Authorized Rates</u>		
		<u>Revenue Required</u>	<u>Increase over Present Rates</u>	<u>Revenue</u>	<u>Increase over Present Rates</u>	<u>Percent of Cost of Service</u>
Residential	\$850,053	\$1,372,667	61.48%	\$1,377,063	62.00%	100.32%
Multifamily Residential	\$133,440	\$226,528	69.76%	\$229,120	71.70%	101.14%
Commercial	\$316,587	\$540,424	70.70%	\$547,344	72.89%	101.28%
Industrial	\$276,168	\$512,319	85.51%	\$498,400	80.47%	97.28%
Public Authority	\$24,456	\$41,623	70.20%	\$41,810	70.96%	100.45%
Public Fire Protection	<u>\$537,429</u>	<u>\$598,638</u>	11.39%	<u>\$598,884</u>	11.43%	100.04%
Total	<u>\$2,138,133</u>	<u>\$3,292,199</u>	<u>53.98%</u>	<u>\$3,292,621</u>	<u>54.00%</u>	<u>100.01%</u>

**Germantown Water Utility - Step II
Comparison of Revenue
at
Present Rates, Cost of Service and Authorized Rates**

<u>Customer Class</u>	<u>Revenue at Present Rates</u>	<u>Cost of Service</u>		<u>Authorized Rates</u>		
		<u>Revenue Required</u>	<u>Increase over Present Rates</u>	<u>Revenue</u>	<u>Increase over Present Rates</u>	<u>Percent of Cost of Service</u>
Residential	\$850,053	\$1,454,336	71.09%	\$1,457,544	71.47%	100.22%
Multifamily Residential	\$133,440	\$242,018	81.37%	\$241,010	80.61%	99.58%
Commercial	\$316,587	\$577,013	82.26%	\$583,006	84.15%	101.04%
Industrial	\$276,168	\$548,034	98.44%	\$539,717	95.43%	98.48%
Public Authority	\$24,456	\$44,368	81.42%	\$44,660	82.61%	100.66%
Public Fire Protection	<u>\$537,429</u>	<u>\$683,374</u>	27.16%	<u>\$683,801</u>	27.24%	100.06%
Total	<u>\$2,138,133</u>	<u>\$3,549,142</u>	<u>65.99%</u>	<u>\$3,549,738</u>	<u>66.02%</u>	<u>100.02%</u>

Germantown Water Utility
Authorized Water Rates and Rules – Step I

Germantown Water Utility

Water Rate File Changes

New

OC-1
Sg-1

Amended

F-1
Upf-1
Mg-1
Am-1
Mpa-1
Ug-1
BW-1
R-1
Cz-1
X-1
X-2
X-3

Deleted

Mg-2
NSF-1
Mgt-1
Mz-1

Public Service Commission of Wisconsin

Germantown Water Utility

Public Fire Protection Service

Public fire protection service shall include the use of hydrants for fire protection service only and such quantities of water as may be demanded for the purpose of extinguishing fires within the service area. This service shall also include water used for testing equipment and training personnel. For all other purposes, the metered or other rates set forth, or as may be filed with the Public Service Commission shall apply.

Municipal Charge:

The annual charge for public fire protection service to the Village of Germantown shall be \$537,000. The utility may bill for this amount in equal installments.

Direct Charges:

Under Wis. Stat. § 196.03(3)(b), the municipality has chosen to have the utility bill the remaining public fire protection service charge to the retail general service customers.

Quarterly Public Fire Protection Service Charges:

5/8 - inch meter:	\$ 2.13	3 - inch meter:	\$ 33.00
3/4 - inch meter:	\$ 2.13	4 - inch meter:	\$ 54.00
1 - inch meter:	\$ 5.31	6 - inch meter:	\$ 108.00
1 1/4 - inch meter:	\$ 7.86	8 - inch meter:	\$ 171.00
1 1/2 - inch meter:	\$ 10.65	10 - inch meter:	\$ 255.00
2 - inch meter:	\$ 18.00	12 - inch meter:	\$ 342.00

Customers who are provided service under Schedules Mg-1, Ug-1, or Sg-1 shall also be subject to the charges in this schedule according to the size of their primary meter. Customers who are provided service under Schedule Am-1 are exempt from these charges for any additional meters.

Billing: Same as Schedule Mg-1.

Public Service Commission of Wisconsin

Germantown Water Utility

Private Fire Protection Service - Unmetered

This service shall consist of permanent or continuous unmetered connections to the main for the purpose of supplying water to private fire protection systems such as automatic sprinkler systems, standpipes, and private hydrants. This service shall also include reasonable quantities of water used for testing check valves and other backflow prevention devices.

Quarterly Private Fire Protection Service Demand Charges:

2 - inch or smaller connection:	\$	24.00
3 - inch connection:	\$	40.00
4 - inch connection:	\$	65.00
6 - inch connection:	\$	130.00
8 - inch connection:	\$	220.00
10 - inch connection:	\$	300.00
12 - inch connection:	\$	350.00
14 - inch connection:	\$	486.00
16 - inch connection:	\$	600.00

Billing: Same as Schedule Mg-1.

Public Service Commission of Wisconsin

Germantown Water Utility

General Service - Metered

Quarterly Service Charges:

5/8 - inch meter:	\$	19.35	3 - inch meter:	\$	141.00
3/4 - inch meter:	\$	19.35	4 - inch meter:	\$	219.00
1 - inch meter:	\$	32.28	6 - inch meter:	\$	405.00
1 1/4 - inch meter:	\$	44.04	8 - inch meter:	\$	621.00
1 1/2 - inch meter:	\$	56.46	10 - inch meter:	\$	909.00
2 - inch meter:	\$	84.69	12 - inch meter:	\$	1,200.00

Plus Volume Charges:

First	100,000	gallons used each quarter:	\$4.15 per 1,000 gallons
Next	900,000	gallons used each quarter:	\$3.60 per 1,000 gallons
Over	1,000,000	gallons used each quarter:	\$3.03 per 1,000 gallons

Billing: Bills for water service are rendered quarterly and become due and payable upon issuance following the period for which service is rendered. A late payment charge of 1 percent per month will be added to bills not paid within 20 days of issuance. This late payment charge will be applied to the total unpaid balance for utility service, including unpaid late payment charges. The late payment charge is applicable to all customers. The utility customer may be given a written notice that the bill is overdue no sooner than 20 days after the bill is issued. Unless payment or satisfactory arrangement for payment is made within the next 10 days, service may be disconnected pursuant to Wis. Adm. Code ch. PSC 185.

Combined Metering: Volumetric meter readings will be combined for billing if the utility for its own convenience places more than one meter on a single water service lateral. Multiple meters placed for the purpose of identifying water not discharged into the sanitary sewer are not considered for utility convenience and shall not be combined for billing. This requirement does not preclude the utility from combining readings when metering configurations support such an approach. Meter readings from individually metered separate service laterals shall not be combined for billing purposes.

Public Service Commission of Wisconsin

Germantown Water Utility

Additional Meter Rental Charge

Upon request, the utility shall furnish and install additional meters to:

- A. Water service customers for the purpose of measuring the volume of water used that is not discharged into the sanitary sewer system; and
- B. Sewerage service customers who are not customers of the water utility for the purpose of determining the volume of sewage that is discharged into the sanitary sewer system.

The utility shall charge a meter installation charge of \$35.00 and a quarterly rental fee for the use of this additional meter.

Quarterly Additional Meter Rental Charges:

5/8 - inch meter:	\$	9.69
3/4 - inch meter:	\$	9.69
1 - inch meter:	\$	16.14
1 1/4 - inch meter:	\$	22.02
1 1/2 - inch meter:	\$	28.23
2 - inch meter:	\$	42.36

This schedule applies only if the additional meter is installed on the same service lateral as the primary meter and either:

- A. The additional meter is 3/4-inch or smaller if the metering configuration is the Addition Method; or
- B. The additional meter is 2-inch or smaller for all other metering configurations.

If the additional meter is larger than 2-inch or larger than 3/4-inch and installed in the Addition Method, each meter shall be treated as a separate account and Schedule Mg-1 rates shall apply.

Billing: Same as Schedule Mg-1.

Public Service Commission of Wisconsin

Germantown Water Utility

Other Charges

Payment Not Honored by Financial Institution Charge: The utility shall assess a \$20.00 charge when a payment rendered for utility service is not honored by the customer’s financial institution. This charge may not be in addition to, but may be inclusive of, other such charges when the payment was for multiple services.

Special Billing Charge: The utility shall assess a \$15.00 charge to the requestor to cover administrative expenses whenever an existing customer or the property owner requests a special billing outside of the normal utility billing. This charge may not be assessed to a new customer.

Special Meter Reading Charge: The utility shall assess a \$15.00 charge to the requestor whenever an existing customer or the property owner requests a special meter reading by utility personnel on a date other than the regularly scheduled meter reading. This charge may not be assessed if the customer or the property owner provides the meter reading. This charge may not be assessed to a new customer.

Missed Appointment Charge: The utility shall assess a missed appointment charge when a customer, without providing reasonable cancellation notice, fails to be present at the customer’s location for an appointment scheduled with utility personnel. The utility may not apply the charge for the first such missed appointment during normal business hours. The utility shall apply the charge for the first such missed appointment after normal business hours.

During normal business hours:	\$30.00
After normal business hours:	\$50.00

Real Estate Closing Account Charge: The utility shall assess a \$15.00 charge whenever a customer or the customer’s agent requests written documentation from the utility of the customer’s account status in connection with a real estate closing.

Billing: Same as Schedule Mg-1.

Public Service Commission of Wisconsin

Germantown Water Utility

Public Service

Metered Service

Water used by the Village of Germantown on an intermittent basis for flushing sewers, street washing, flooding skating rinks, drinking fountains, etc., shall be metered and billed according to the rates set forth in Schedule Mg-1.

Unmetered Service

Where it is impossible to meter the service, the utility shall estimate the volume of water used based on the pressure, size of opening, and the period of time the water is used. The estimated quantity shall be billed at the volumetric rates set forth in Schedule Mg-1, excluding any service charges.

Billing: Same as Schedule Mg-1.

Public Service Commission of Wisconsin

Germantown Water Utility

General Water Service - Unmetered

Service may be supplied temporarily on an unmetered basis where the utility cannot immediately install a water meter, including water used for construction. Unmetered service shall be billed the amount that would be charged to a metered residential customer using 12,000 gallons of water quarterly under Schedule Mg-1, including the service charge for a 5/8-inch meter. If the utility determines that actual usage exceeds 12,000 gallons of water quarterly, an additional charge for the estimated excess usage shall be made according to the rates under Schedule Mg-1.

This schedule applies only to customers with a 1-inch or smaller service connection. For customers with a larger service connection, the utility shall install a temporary meter and charges shall be based on the rates set forth under Schedule Mg-1.

Billing: Same as Schedule Mg-1.

Public Service Commission of Wisconsin

Germantown Water Utility

Seasonal Service

Seasonal customers are general service customers who voluntarily request disconnection of water service and who resume service at the same location within 12 months of the disconnection, unless service has been provided to another customer at that location in the intervening period. The utility shall bill seasonal customers the applicable service charges under Schedule Mg-1 year-round, including the period of temporary disconnection.

Seasonal service shall include customers taking service under Schedule Mg-1, Schedule Ug-1, or Schedule Am-1.

Upon reconnection, the utility shall apply a charge under Schedule R-1 and require payment of any unpaid charges under this schedule.

Billing: Same as Schedule Mg-1, unless the utility and customer agree to an alternative payment schedule for the period of voluntary disconnection.

Public Service Commission of Wisconsin

Germantown Water Utility

Bulk Water

All bulk water supplied from the water system through hydrants or other connections shall be metered or estimated by the utility. Utility personnel or a party approved by the utility shall supervise the delivery of water.

Bulk water sales are:

- A. Water supplied by tank trucks or from hydrants for the purpose of extinguishing fires outside the utility's service area;
- B. Water supplied by tank trucks or from hydrants for purposes other than extinguishing fires, such as water used for irrigation or filling swimming pools; or,
- C. Water supplied from hydrants or other temporary connections for general service type applications, except that Schedule Ug-1 applies for water supplied for construction purposes.

A service charge of \$45.00 and a charge for the volume of water used shall be billed to the party using the water. The volumetric charge shall be calculated using the highest volumetric rate for residential customers under Schedule Mg-1. In addition, for meters that are assigned to bulk water customers for more than 7 days, the applicable service charge in Schedule Mg-1 will apply after the first 7 days.

The water utility may require a reasonable deposit for the temporary use of its equipment under this and other rate schedules. The deposit(s) collected shall be refunded upon return of the utility's equipment. Damaged or lost equipment shall be repaired or replaced at the customer's expense.

Billing: Same as Schedule Mg-1.

Public Service Commission of Wisconsin

Germantown Water Utility

Reconnection Charges

The utility shall assess a charge to reconnect a customer, which includes reinstalling a meter and turning on the valve at the curb stop, if necessary. A utility may not assess a charge for disconnecting a customer.

During normal business hours:	\$45.00
After normal business hours:	\$60.00

Billing: Same as Schedule Mg-1.

Public Service Commission of Wisconsin

Germantown Water Utility

Water Lateral Installation Charge
--

The utility shall charge a customer for the actual cost of installing a water service lateral from the main through curb stop and box if these costs are not contributed as part of a subdivision development or otherwise recovered under Wis. Stats. Chapter 66.

Billing: Same as Schedule Mg-1.

Germantown Water Utility

Water Utility Operating Rules

Compliance with Rules

All persons now receiving water service from this water utility, or who may request service in the future, shall be considered as having agreed to be bound by the rules and regulations as filed with the Public Service Commission of Wisconsin.

Establishment of Service

Application for water service may be made in writing on a form furnished by the water utility. The application will contain the legal description of the property to be served, the name of the owner, the exact use to be made of the service, and the size of the service lateral and meter desired. Note particularly any special refrigeration, fire protection, or water-consuming air-conditioning equipment.

Service will be furnished only if (1) the premises have a frontage on a properly platted street or public strip in which a cast iron or other long-life water main has been laid, or where the property owner has agreed to and complied with the provisions of the water utility's filed main extension rule, (2) the property owner has installed or agrees to install a service lateral from the curb stop to the point of use that is not less than 6 feet below the surface of an established or proposed grade and meets the water utility's specifications, and (3) the premises have adequate piping beyond the metering point.

The owner of a multi-unit dwelling has the option of being served by individual metered water service to each unit. The owner, by selecting this option, is required to provide interior plumbing and meter settings to enable individual metered service to each unit and individual disconnection without affecting service to other units. Each meter and meter connection will be treated as a separate water utility account for the purpose of the filed rules and regulations.

No division of the water service lateral to any lot or parcel of land shall be made for the extension and independent metering of the supply to an adjoining lot or parcel of land. Except for duplexes, no division of a water service lateral shall be made at the curb for separate supplies for two or more separate premises having frontage on any street or public service strip, whether owned by the same or different parties. Duplexes may be served by one lateral provided (1) individual metered service and disconnection is provided and (2) it is permitted by local ordinance.

Buildings used in the same business, located on the same parcel, and served by a single lateral may have the customer's water supply piping installed to a central point so that volume can be metered in one place.

The water utility may withhold approval of any application where full information of the purpose of such supply is not clearly indicated and set forth by the applicant property owner.

Public Service Commission of Wisconsin

Germantown Water Utility

Water Utility Operating Rules

Reconnection of Service

Where the water utility has disconnected service at the customer’s request, a reconnection charge shall be made when the customer requests reconnection of service. See Schedule R-1 for the applicable rate.

A reconnection charge shall also be required from customers whose services are disconnected (shut off at curb stop box) because of nonpayment of bills when due. See Schedule R-1 for the applicable rate.

If reconnection is requested for the same location by any member of the same household, or, if a place of business, by any partner of the same business, it shall be considered as the same customer.

Temporary Metered Service, Meter, and Deposits

An applicant for temporary water service on a metered basis shall make and maintain a monetary deposit for each meter installed as security for payment for use of water and for such other charges which may arise from the use of the supply. A charge shall be made for setting the valve and furnishing and setting the meter. See Schedule BW-1 for the applicable rate.

Water for Construction

When water is requested for construction purposes or for filling tanks or other such uses, an application shall be made to the water utility, in writing, giving a statement of the amount of construction work to be done or the size of the tank to be filled, etc. Payment for the water for construction may be required in advance at the scheduled rates. The service lateral must be installed into the building before water can be used. No connection with the service lateral at the curb shall be made without special permission from the water utility. In no case will any employee of the water utility turn on water for construction work unless the contractor has obtained permission from the water utility.

Customers shall not allow contractors, masons, or other persons to take unmetered water from their premises without permission from the water utility. Any customer failing to comply with this provision may have water service discontinued and will be responsible for the cost of the estimated volume of water used.

Public Service Commission of Wisconsin

Germantown Water Utility

Water Utility Operating Rules

Use of Hydrants

In cases where no other supply is available, permission may be granted by the water utility to use a hydrant. No hydrant shall be used until the proper meter and valve are installed. In no case shall any valve be installed or moved except by an employee of the water utility.

Before a valve is set, payment must be made for its setting and for the water to be used at the scheduled rates. Where applicable, see Schedule BW-1 for deposits and charges. Upon completing the use of the hydrant, the customer must notify the water utility to that effect.

Operation of Valves and Hydrants and Unauthorized Use of Water - Penalty

Any person who shall, without authority of the water utility, allow contractors, masons, or other unauthorized persons to take water from their premises, operate any valve connected with the street or supply mains, or open any fire hydrant connected with the distribution system, except for the purpose of extinguishing fire, or who shall wantonly damage or impair the same, shall be subject to a fine as provided by municipal ordinance. Utility permission for the use of hydrants applies only to such hydrants that are designated for the specific use.

Refunds of Monetary Deposits

All money deposited as security for payment of charges arising from the use of temporary water service on a metered basis, or for the return of a hydrant valve and fixtures if the water is used on an unmetered basis, will be refunded to the depositor on the termination of the use of water, the payment of all charges levied against the depositor, and the return of the water utility's equipment.

Service Laterals

No water service lateral shall be laid through any trench having cinders, rubbish, rock or gravel fill, or any other material which may cause injury to or disintegration of the service lateral, unless adequate means of protection are provided by sand filling or such other insulation as may be approved by the water utility. Service laterals passing through curb or retaining walls shall be adequately safeguarded by provision of a channel space or pipe casing not less than twice the diameter of the service connection. The space between the service lateral and the channel or pipe casing shall be filled and lightly caulked with an oakum, mastic cement, or other resilient material and made impervious to moisture.

In backfilling the pipe trench, the service lateral must be protected against injury by carefully hand tamping the ground filling around the pipe. There should be at least 6 inches of ground filling over the pipe, and it should be free from hard lumps, rocks, stones, or other injurious material.

Public Service Commission of Wisconsin

Germantown Water Utility

Water Utility Operating Rules

Service Laterals (continued)

All water service laterals shall be of undiminished size from the street main into the point of meter placement. Beyond the meter outlet valve, the piping shall be sized and proportioned to provide, on all floors, at all times, an equitable distribution of the water supply for the greatest probable number of fixtures or appliances operating simultaneously.

Replacement and Repair of Service Laterals

The service lateral from the main to and through the curb stop will be maintained and kept in repair and, when worn out, replaced at the expense of the water utility. The property owner shall maintain the service lateral from the curb stop to the point of use.

If an owner fails to repair a leaking or broken service lateral from the curb to the point of metering or use within such time as may appear reasonable to the water utility after notification has been served on the owner by the water utility, the water will be shut off and will not be turned on again until the repairs have been completed.

Abandonment of Service

If a property owner changes the use of a property currently receiving water service such that water service will no longer be needed in the future, the water utility may require the abandonment of the water service at the water main. In such case, the property owner may be responsible for all removal and/or repair costs, including the water main and the utility portion of the water service lateral.

Charges for Water Wasted Due to Leaks

See Wis. Admin. Code § PSC 185.35 or Schedule X-4, if applicable.

Thawing Frozen Service Laterals

See Wis. Admin. Code § PSC 185.88 or Schedule X-4, if applicable.

Curb Stop Boxes

The curb stop box is the property of the water utility. The water utility is responsible for its repair and maintenance. This includes maintaining, through adjustment, the curb stop box at an appropriate grade level where no direct action by the property owner or occupant has contributed to an elevation problem. The property owner is responsible for protecting the curb stop box from situations that could obstruct access to it or unduly expose it to harm. The water utility shall not be liable for failure to locate the curb stop box and shut off the water in case of a leak on the owner’s premises.

Germantown Water Utility

Water Utility Operating Rules

Installation of Meters

Meters will be owned, furnished, and installed by the water utility or a utility-approved contractor and are not to be disconnected or tampered with by the customer. All meters shall be so located that they shall be protected from obstructions and permit ready access for reading, inspection, and servicing, such location to be designated or approved by the water utility. All piping within the building must be supplied by the owner. Where additional meters are desired by the owner, the owner shall pay for all piping. Where applicable, see Schedule Am-1 for rates.

Repairs to Meters

Meters will be repaired by the water utility, and the cost of such repairs caused by ordinary wear and tear will be borne by the water utility.

Repair of any damage to a meter resulting from the carelessness of the owner of the premises, owner's agent, or tenant, or from the negligence of any one of them to properly secure and protect same, including any damage that may result from allowing a water meter to become frozen or to be damaged from the presence of hot water or steam in the meter, shall be paid for by the customer or the owner of the premises.

Service Piping for Meter Settings

Where the original service piping is installed for a new metered customer, where existing service piping is changed for the customer's convenience, or where a new meter is installed for an existing unmetered customer, the owner of the premises at his/her expense shall provide a suitable location and the proper connections for the meter. The meter setting and associated plumbing shall comply with the water utility's standards. The water utility should be consulted as to the type and size of the meter setting.

Turning on Water

The water may only be turned on for a customer by an authorized employee of the water utility. Plumbers may turn the water on to test their work, but upon completion must leave the water turned off.

Sprinkling Restrictions and Emergency Water Conditions

Where the municipality has a policy regarding sprinkling restrictions and/or emergency water conditions, failure to comply with such may result in disconnection of service.

See Wis. Admin. Code § PSC 185.37.

EFFECTIVE: =TBD=
PSCW AUTHORIZATION: 2210-WR-106

Public Service Commission of Wisconsin

Germantown Water Utility

Water Utility Operating Rules

Failure to Read Meters

Where the water utility is unable to read a meter, the fact will be plainly indicated on the bill, and either an estimated bill will be computed or the minimum charge applied. The difference shall be adjusted when the meter is again read, that is, the bill for the succeeding billing period will be computed with the gallons or cubic feet in each block of the rate schedule doubled, and credit will be given on that bill for the amount of the bill paid the preceding period. Only in unusual cases shall more than three consecutive estimated or minimum bills be rendered.

If the meter is damaged (see Surreptitious Use of Water) or fails to operate, the bill will be based on the average use during the past year, unless there is some reason why the use is not normal. If the average use cannot be properly determined, the bill will be estimated by some equitable method.

See Wis. Admin. Code § PSC 185.33.

Complaint Meter Tests

See Wis. Admin. Code § PSC 185.77.

Inspection of Premises

During reasonable hours, any officer or authorized employee of the water utility shall have the right of access to the premises supplied with service for the purpose of inspection or for the enforcement of the water utility's rules and regulations. Whenever appropriate, the water utility will make a systematic inspection of all unmetered water taps for the purpose of checking waste and unnecessary use of water.

See Wis. Stat. § 196.171.

Vacation of Premises

When premises are to be vacated, the water utility shall be notified, in writing, at once, so that it may remove the meter and shut off the water supply at the curb stop. The owner of the premises shall be liable for prosecution for any damage to the water utility's property. See "Abandonment of Service" in Schedule X-1 for further information.

Deposits for Residential Service

See Wis. Admin. Code § PSC 185.36.

Public Service Commission of Wisconsin

Germantown Water Utility

Water Utility Operating Rules

Deposits for Nonresidential Service

See Wis. Admin. Code § PSC 185.361.

Deferred Payment Agreement

See Wis. Admin. Code § PSC 185.38 or Schedule X-4, if applicable.

Dispute Procedures

See Wis. Admin. Code § PSC 185.39.

Disconnection and Refusal of Service

See Wis. Admin. Code § PSC 185.37.

The following is an example of a disconnection notice that the utility may use to provide the required notice to customers.

DISCONNECTION NOTICE

Dear Customer:

The bill enclosed with this notice includes your current charge for water utility service and your previous unpaid balance.

You have 10 days to pay the water utility service arrears or your service is subject to disconnection.

If you fail to pay the service arrears or fail to contact us within the 10 days allowed to make reasonable deferred payment arrangement or other suitable arrangement, we will proceed with disconnection action.

To avoid the inconvenience of service interruption and an additional charge of (amount) for reconnection, we urge you to pay the full arrears IMMEDIATELY AT ONE OF OUR OFFICES.

If you have entered into a Deferred Payment Agreement with us and have failed to make the deferred payments you agreed to, your service will be subject to disconnection unless you pay the entire amount due within 10 days.

If you have a reason for delaying the payment, call us and explain the situation.

Public Service Commission of Wisconsin

Germantown Water Utility

Water Utility Operating Rules

Disconnection and Refusal of Service (continued)

DISCONNECTION NOTICE (continued)

PLEASE CALL THIS TELEPHONE NUMBER, (telephone number), IMMEDIATELY IF:

1. You dispute the notice of delinquent account.
2. You have a question about your water utility service arrears.
3. You are unable to pay the full amount of the bill and are willing to enter into a deferred payment agreement with us.
4. There are any circumstances you think should be taken into consideration before service is discontinued.
5. Any resident is seriously ill.

Illness Provision: If there is an existing medical emergency in your home and you furnish the water utility with a statement signed by either a licensed Wisconsin physician or a public health official, we will delay disconnection of service up to 21 days. The statement must identify the medical emergency and specify the period of time during which disconnection will aggravate the existing emergency.

Deferred Payment Agreements: If you are a residential customer and you are unable to pay the full amount of the water utility service arrears on your bill, you may contact the water utility to discuss arrangements to pay the arrears over an extended period of time.

This time payment agreement will require:

1. Payment of a reasonable amount at the time the agreement is made.
2. Payment of the remainder of the outstanding balance in monthly installments over a reasonable length of time.
3. Payment of all future water utility service bills in full by the due date.

In any situation where you are unable to resolve billing disputes or disputes about the grounds for proposed disconnection through contacts with our water utility, you may make an appeal to the Public Service Commission of Wisconsin by calling (800) 225-7729.

(WATER UTILITY NAME)

Public Service Commission of Wisconsin

Germantown Water Utility

Water Utility Operating Rules

Collection of Overdue Bills

An amount owed by the customer may be levied as a tax as provided in Wis. Stat. § 66.0809.

Surreptitious Use of Water

When the water utility has reasonable evidence that a person is obtaining water, in whole or in part, by means of devices or methods used to stop or interfere with the proper metering of the water utility service being delivered, the water utility reserves the right to estimate and present immediately a bill for unmetered service as a result of such interference, and such bill shall be payable subject to a 24-hour disconnection of service. If the water utility disconnects the service for any such reason, the water utility will reconnect the service upon the following conditions:

- A. The customer will be required to deposit with the water utility an amount sufficient to guarantee the payment of the bills for water utility service.
- B. The customer will be required to pay the water utility for any and all damages to water utility equipment resulting from such interference with the metering.
- C. The customer must further agree to comply with reasonable requirements to protect the water utility against further losses.

See Wis. Stat. §§ 98.26 and 943.20.

Repairs to Mains

The water utility reserves the right to shut off the water supply in the mains temporarily to make repairs, alterations, or additions to the plant or system. When the circumstances will permit, the water utility will give notification, by newspaper publication or otherwise, of the discontinuance of the water supply. No credit will be allowed to customers for such temporary suspension of the water supply.

See Wis. Admin. Code § PSC 185.87.

Duty of Water Utility with Respect to Safety of the Public

It shall be the duty of the water utility to see that all open ditches for water mains, hydrants, and service laterals are properly guarded to prevent accident to any person or vehicle, and at night there shall be displayed proper signal lighting to insure the safety of the public.

Germantown Water Utility

Water Utility Operating Rules

Handling Water Mains and Service Laterals in Excavation Trenches

Contractors must call Digger’s Hotline and ensure a location is done to establish the existence and location of all water mains and service laterals as provided in Wis. Stat. § 182.0175. Where water mains or service laterals have been removed, cut, or damaged during trench excavation, the contractors must, at their own expense, cause them to be replaced or repaired at once. Contractors must not shut off the water service laterals to any customer for a period exceeding 6 hours.

Protective Devices

- A. Protective Devices in General: The owner or occupant of every premise receiving water supply shall apply and maintain suitable means of protection of the premise supply and all appliances against damage arising in any manner from the use of the water supply, variation of water pressure, or any interruption of water supply. Particularly, such owner or occupant must protect water-cooled compressors for refrigeration systems by means of high and/or low pressure safety cutout devices. There shall likewise be provided means for the prevention of the transmission of water ram or noise of operation of any valve or appliance through the piping of their own or adjacent premises.
- B. Relief Valves: On all "closed systems" (i.e., systems having a check valve, pressure regulator, reducing valve, water filter, or softener), an effective pressure relief valve shall be installed at or near the top of the hot water tank or at the hot water distribution pipe connection to the tank. No stop valve shall be placed between the hot water tank and the relief valve or on the drain pipe. See applicable plumbing codes.
- C. Air Chambers: An air chamber or approved shock absorber shall be installed at the terminus of each riser, fixture branch, or hydraulic elevator main for the prevention of undue water hammer. The air chamber shall be sized in conformance with local plumbing codes. Where possible, the air chamber should be provided at its base with a valve for water drainage and replenishment of air.

Cross-Connections

Every person owning or occupying a premise receiving municipal water supply shall maintain such municipal water supply free from any connection, either of a direct or of an indirect nature, with a water supply from a foreign source or of any manner of connection with any fixture or appliance whereby water from a foreign supply or the waste from any fixture, appliance, or waste or soil pipe may flow or be siphoned or pumped into the piping of the municipal water system.

See Wis. Admin. Code § NR 811.06.

Public Service Commission of Wisconsin

Germantown Water Utility

Water Main Extension Rule

Water mains will be extended for new customers on the following basis:

- A. Where the cost of the extension is to immediately be collected through assessment by the municipality against the abutting property, the procedure set forth under Wis. Stat. § 66.0703 will apply, and no additional customer contribution to the utility will be required.
- B. Where the municipality is unwilling or unable to make a special assessment, the extension will be made on a customer-financed basis as follows:
 - 1. The applicant(s) will advance as a contribution in aid of construction the total amount equivalent to that which would have been assessed for all property under paragraph A.
 - 2. Part of the contribution required in paragraph B.1. will be refundable. When additional customers are connected to the extended main within 10 years of the date of completion, contributions in aid of construction will be collected equal to the amount which would have been assessed under paragraph A. for the abutting property being served. This amount will be refunded to the original contributor(s). In no case will the contributions received from additional customers exceed the proportionate amount which would have been required under paragraph A., nor will it exceed the total assessable cost of the original extension.
- C. When a customer connects to a transmission main or connecting loop installed at utility expense within 10 years of the date of completion, there will be a contribution required of an amount equivalent to that which would have been assessed under paragraph A.

Public Service Commission of Wisconsin

Germantown Water Utility

Water Main Installations in Platted Subdivisions

Application for installation of water mains in regularly platted real estate development subdivisions shall be filed with the utility.

If the developer, or a contractor employed by the developer, is to install the water mains (with the approval of the utility), the developer shall be responsible for the total cost of construction.

If the utility or its contractor is to install the water mains, the developer shall be required to advance to the utility, prior to the beginning of the construction, the total estimated cost of the extension. If the final costs exceed estimated costs, an additional billing will be made for the balance of the cost due. This balance is to be paid within 30 days. If final costs are less than estimated, a refund of the overpayment will be made by the water utility.

Germantown Water Utility
Authorized Water Rates and Rules – Step II

Docket 2210-WR-106

Germantown Water Utility

Water Rate File Changes

Amended

F-1
Upf-1
Mg-1
Am-1
OC-1
Mpa-1
Ug-1
Sg-1
BW-1
R-1
Cz-1
X-1
X-2
X-3

Public Service Commission of Wisconsin

Germantown Water Utility

Public Fire Protection Service

Public fire protection service shall include the use of hydrants for fire protection service only and such quantities of water as may be demanded for the purpose of extinguishing fires within the service area. This service shall also include water used for testing equipment and training personnel. For all other purposes, the metered or other rates set forth, or as may be filed with the Public Service Commission shall apply.

Municipal Charge:

The annual charge for public fire protection service to the Village of Germantown shall be \$537,000. The utility may bill for this amount in equal installments.

Direct Charges:

Under Wis. Stat. § 196.03(3)(b), the municipality has chosen to have the utility bill the remaining public fire protection service charge to the retail general service customers.

Quarterly Public Fire Protection Service Charges:

5/8 - inch meter:	\$ 5.07	3 - inch meter:	\$ 75.00
3/4 - inch meter:	\$ 5.07	4 - inch meter:	\$ 126.00
1 - inch meter:	\$ 12.66	6 - inch meter:	\$ 255.00
1 1/4 - inch meter:	\$ 18.75	8 - inch meter:	\$ 405.00
1 1/2 - inch meter:	\$ 25.32	10 - inch meter:	\$ 609.00
2 - inch meter:	\$ 42.00	12 - inch meter:	\$ 810.00

Customers who are provided service under Schedules Mg-1, Ug-1, or Sg-1 shall also be subject to the charges in this schedule according to the size of their primary meter. Customers who are provided service under Schedule Am-1 are exempt from these charges for any additional meters.

Billing: Same as Schedule Mg-1.

Public Service Commission of Wisconsin

Germantown Water Utility

Private Fire Protection Service - Unmetered

This service shall consist of permanent or continuous unmetered connections to the main for the purpose of supplying water to private fire protection systems such as automatic sprinkler systems, standpipes, and private hydrants. This service shall also include reasonable quantities of water used for testing check valves and other backflow prevention devices.

Quarterly Private Fire Protection Service Demand Charges:

2 - inch or smaller connection:	\$	24.00
3 - inch connection:	\$	40.00
4 - inch connection:	\$	65.00
6 - inch connection:	\$	130.00
8 - inch connection:	\$	220.00
10 - inch connection:	\$	300.00
12 - inch connection:	\$	350.00
14 - inch connection:	\$	486.00
16 - inch connection:	\$	600.00

Billing: Same as Schedule Mg-1.

Public Service Commission of Wisconsin

Germantown Water Utility

General Service - Metered

Quarterly Service Charges:

5/8 - inch meter:	\$ 21.00	3 - inch meter:	\$ 141.00
3/4 - inch meter:	\$ 21.00	4 - inch meter:	\$ 219.00
1 - inch meter:	\$ 33.00	6 - inch meter:	\$ 405.00
1 1/4 - inch meter:	\$ 45.00	8 - inch meter:	\$ 621.00
1 1/2 - inch meter:	\$ 57.00	10 - inch meter:	\$ 909.00
2 - inch meter:	\$ 87.00	12 - inch meter:	\$ 1,200.00

Plus Volume Charges:

First	100,000	gallons used each quarter:	\$4.35 per 1,000 gallons
Next	900,000	gallons used each quarter:	\$3.92 per 1,000 gallons
Over	1,000,000	gallons used each quarter:	\$3.29 per 1,000 gallons

Billing: Bills for water service are rendered quarterly and become due and payable upon issuance following the period for which service is rendered. A late payment charge of 1 percent per month will be added to bills not paid within 20 days of issuance. This late payment charge will be applied to the total unpaid balance for utility service, including unpaid late payment charges. The late payment charge is applicable to all customers. The utility customer may be given a written notice that the bill is overdue no sooner than 20 days after the bill is issued. Unless payment or satisfactory arrangement for payment is made within the next 10 days, service may be disconnected pursuant to Wis. Adm. Code ch. PSC 185.

Combined Metering: Volumetric meter readings will be combined for billing if the utility for its own convenience places more than one meter on a single water service lateral. Multiple meters placed for the purpose of identifying water not discharged into the sanitary sewer are not considered for utility convenience and shall not be combined for billing. This requirement does not preclude the utility from combining readings when metering configurations support such an approach. Meter readings from individually metered separate service laterals shall not be combined for billing purposes.

Public Service Commission of Wisconsin

Germantown Water Utility

Additional Meter Rental Charge

Upon request, the utility shall furnish and install additional meters to:

- C. Water service customers for the purpose of measuring the volume of water used that is not discharged into the sanitary sewer system; and
- D. Sewerage service customers who are not customers of the water utility for the purpose of determining the volume of sewage that is discharged into the sanitary sewer system.

The utility shall charge a meter installation charge of \$35.00 and a quarterly rental fee for the use of this additional meter.

Quarterly Additional Meter Rental Charges:

5/8 - inch meter:	\$	10.50
3/4 - inch meter:	\$	10.50
1 - inch meter:	\$	16.50
1 1/4 - inch meter:	\$	22.50
1 1/2 - inch meter:	\$	28.50
2 - inch meter:	\$	43.50

This schedule applies only if the additional meter is installed on the same service lateral as the primary meter and either:

- A. The additional meter is 3/4-inch or smaller if the metering configuration is the Addition Method; or
- B. The additional meter is 2-inch or smaller for all other metering configurations.

If the additional meter is larger than 2-inch or larger than 3/4-inch and installed in the Addition Method, each meter shall be treated as a separate account and Schedule Mg-1 rates shall apply.

Billing: Same as Schedule Mg-1.

Public Service Commission of Wisconsin

Germantown Water Utility

Other Charges

Payment Not Honored by Financial Institution Charge: The utility shall assess a \$20.00 charge when a payment rendered for utility service is not honored by the customer’s financial institution. This charge may not be in addition to, but may be inclusive of, other such charges when the payment was for multiple services.

Special Billing Charge: The utility shall assess a \$15.00 charge to the requestor to cover administrative expenses whenever an existing customer or the property owner requests a special billing outside of the normal utility billing. This charge may not be assessed to a new customer.

Special Meter Reading Charge: The utility shall assess a \$15.00 charge to the requestor whenever an existing customer or the property owner requests a special meter reading by utility personnel on a date other than the regularly scheduled meter reading. This charge may not be assessed if the customer or the property owner provides the meter reading. This charge may not be assessed to a new customer.

Missed Appointment Charge: The utility shall assess a missed appointment charge when a customer, without providing reasonable cancellation notice, fails to be present at the customer’s location for an appointment scheduled with utility personnel. The utility may not apply the charge for the first such missed appointment during normal business hours. The utility shall apply the charge for the first such missed appointment after normal business hours.

During normal business hours:	\$30.00
After normal business hours:	\$50.00

Real Estate Closing Account Charge: The utility shall assess a \$15.00 charge whenever a customer or the customer’s agent requests written documentation from the utility of the customer’s account status in connection with a real estate closing.

Billing: Same as Schedule Mg-1.

Public Service Commission of Wisconsin

Germantown Water Utility

Public Service

Metered Service

Water used by the Village of Germantown on an intermittent basis for flushing sewers, street washing, flooding skating rinks, drinking fountains, etc., shall be metered and billed according to the rates set forth in Schedule Mg-1.

Unmetered Service

Where it is impossible to meter the service, the utility shall estimate the volume of water used based on the pressure, size of opening, and the period of time the water is used. The estimated quantity shall be billed at the volumetric rates set forth in Schedule Mg-1, excluding any service charges.

Billing: Same as Schedule Mg-1.

Public Service Commission of Wisconsin

Germantown Water Utility

General Water Service - Unmetered

Service may be supplied temporarily on an unmetered basis where the utility cannot immediately install a water meter, including water used for construction. Unmetered service shall be billed the amount that would be charged to a metered residential customer using 12,000 gallons of water quarterly under Schedule Mg-1, including the service charge for a 5/8-inch meter. If the utility determines that actual usage exceeds 12,000 gallons of water quarterly, an additional charge for the estimated excess usage shall be made according to the rates under Schedule Mg-1.

This schedule applies only to customers with a 1-inch or smaller service connection. For customers with a larger service connection, the utility shall install a temporary meter and charges shall be based on the rates set forth under Schedule Mg-1.

Billing: Same as Schedule Mg-1.

Public Service Commission of Wisconsin

Germantown Water Utility

Seasonal Service

Seasonal customers are general service customers who voluntarily request disconnection of water service and who resume service at the same location within 12 months of the disconnection, unless service has been provided to another customer at that location in the intervening period. The utility shall bill seasonal customers the applicable service charges under Schedule Mg-1 year-round, including the period of temporary disconnection.

Seasonal service shall include customers taking service under Schedule Mg-1, Schedule Ug-1, or Schedule Am-1.

Upon reconnection, the utility shall apply a charge under Schedule R-1 and require payment of any unpaid charges under this schedule.

Billing: Same as Schedule Mg-1, unless the utility and customer agree to an alternative payment schedule for the period of voluntary disconnection.

Public Service Commission of Wisconsin

Germantown Water Utility

Bulk Water

All bulk water supplied from the water system through hydrants or other connections shall be metered or estimated by the utility. Utility personnel or a party approved by the utility shall supervise the delivery of water.

Bulk water sales are:

- A. Water supplied by tank trucks or from hydrants for the purpose of extinguishing fires outside the utility's service area;
- B. Water supplied by tank trucks or from hydrants for purposes other than extinguishing fires, such as water used for irrigation or filling swimming pools; or,
- C. Water supplied from hydrants or other temporary connections for general service type applications, except that Schedule Ug-1 applies for water supplied for construction purposes.

A service charge of \$45.00 and a charge for the volume of water used shall be billed to the party using the water. The volumetric charge shall be calculated using the highest volumetric rate for residential customers under Schedule Mg-1. In addition, for meters that are assigned to bulk water customers for more than 7 days, the applicable service charge in Schedule Mg-1 will apply after the first 7 days.

The water utility may require a reasonable deposit for the temporary use of its equipment under this and other rate schedules. The deposit(s) collected shall be refunded upon return of the utility's equipment. Damaged or lost equipment shall be repaired or replaced at the customer's expense.

Billing: Same as Schedule Mg-1.

Public Service Commission of Wisconsin

Germantown Water Utility

Reconnection Charges

The utility shall assess a charge to reconnect a customer, which includes reinstalling a meter and turning on the valve at the curb stop, if necessary. A utility may not assess a charge for disconnecting a customer.

During normal business hours:	\$45.00
After normal business hours:	\$60.00

Billing: Same as Schedule Mg-1.

Public Service Commission of Wisconsin

Germantown Water Utility

Water Lateral Installation Charge
--

The utility shall charge a customer for the actual cost of installing a water service lateral from the main through curb stop and box if these costs are not contributed as part of a subdivision development or otherwise recovered under Wis. Stats. Chapter 66.

Billing: Same as Schedule Mg-1.

Public Service Commission of Wisconsin

Germantown Water Utility

Water Utility Operating Rules

Compliance with Rules

All persons now receiving water service from this water utility, or who may request service in the future, shall be considered as having agreed to be bound by the rules and regulations as filed with the Public Service Commission of Wisconsin.

Establishment of Service

Application for water service may be made in writing on a form furnished by the water utility. The application will contain the legal description of the property to be served, the name of the owner, the exact use to be made of the service, and the size of the service lateral and meter desired. Note particularly any special refrigeration, fire protection, or water-consuming air-conditioning equipment.

Service will be furnished only if (1) the premises have a frontage on a properly platted street or public strip in which a cast iron or other long-life water main has been laid, or where the property owner has agreed to and complied with the provisions of the water utility's filed main extension rule, (2) the property owner has installed or agrees to install a service lateral from the curb stop to the point of use that is not less than 6 feet below the surface of an established or proposed grade and meets the water utility's specifications, and (3) the premises have adequate piping beyond the metering point.

The owner of a multi-unit dwelling has the option of being served by individual metered water service to each unit. The owner, by selecting this option, is required to provide interior plumbing and meter settings to enable individual metered service to each unit and individual disconnection without affecting service to other units. Each meter and meter connection will be treated as a separate water utility account for the purpose of the filed rules and regulations.

No division of the water service lateral to any lot or parcel of land shall be made for the extension and independent metering of the supply to an adjoining lot or parcel of land. Except for duplexes, no division of a water service lateral shall be made at the curb for separate supplies for two or more separate premises having frontage on any street or public service strip, whether owned by the same or different parties. Duplexes may be served by one lateral provided (1) individual metered service and disconnection is provided and (2) it is permitted by local ordinance.

Buildings used in the same business, located on the same parcel, and served by a single lateral may have the customer's water supply piping installed to a central point so that volume can be metered in one place.

The water utility may withhold approval of any application where full information of the purpose of such supply is not clearly indicated and set forth by the applicant property owner.

Public Service Commission of Wisconsin

Germantown Water Utility

Water Utility Operating Rules

Reconnection of Service

Where the water utility has disconnected service at the customer’s request, a reconnection charge shall be made when the customer requests reconnection of service. See Schedule R-1 for the applicable rate.

A reconnection charge shall also be required from customers whose services are disconnected (shut off at curb stop box) because of nonpayment of bills when due. See Schedule R-1 for the applicable rate.

If reconnection is requested for the same location by any member of the same household, or, if a place of business, by any partner of the same business, it shall be considered as the same customer.

Temporary Metered Service, Meter, and Deposits

An applicant for temporary water service on a metered basis shall make and maintain a monetary deposit for each meter installed as security for payment for use of water and for such other charges which may arise from the use of the supply. A charge shall be made for setting the valve and furnishing and setting the meter. See Schedule BW-1 for the applicable rate.

Water for Construction

When water is requested for construction purposes or for filling tanks or other such uses, an application shall be made to the water utility, in writing, giving a statement of the amount of construction work to be done or the size of the tank to be filled, etc. Payment for the water for construction may be required in advance at the scheduled rates. The service lateral must be installed into the building before water can be used. No connection with the service lateral at the curb shall be made without special permission from the water utility. In no case will any employee of the water utility turn on water for construction work unless the contractor has obtained permission from the water utility.

Customers shall not allow contractors, masons, or other persons to take unmetered water from their premises without permission from the water utility. Any customer failing to comply with this provision may have water service discontinued and will be responsible for the cost of the estimated volume of water used.

Public Service Commission of Wisconsin

Germantown Water Utility

Water Utility Operating Rules

Use of Hydrants

In cases where no other supply is available, permission may be granted by the water utility to use a hydrant. No hydrant shall be used until the proper meter and valve are installed. In no case shall any valve be installed or moved except by an employee of the water utility.

Before a valve is set, payment must be made for its setting and for the water to be used at the scheduled rates. Where applicable, see Schedule BW-1 for deposits and charges. Upon completing the use of the hydrant, the customer must notify the water utility to that effect.

Operation of Valves and Hydrants and Unauthorized Use of Water - Penalty

Any person who shall, without authority of the water utility, allow contractors, masons, or other unauthorized persons to take water from their premises, operate any valve connected with the street or supply mains, or open any fire hydrant connected with the distribution system, except for the purpose of extinguishing fire, or who shall wantonly damage or impair the same, shall be subject to a fine as provided by municipal ordinance. Utility permission for the use of hydrants applies only to such hydrants that are designated for the specific use.

Refunds of Monetary Deposits

All money deposited as security for payment of charges arising from the use of temporary water service on a metered basis, or for the return of a hydrant valve and fixtures if the water is used on an unmetered basis, will be refunded to the depositor on the termination of the use of water, the payment of all charges levied against the depositor, and the return of the water utility's equipment.

Service Laterals

No water service lateral shall be laid through any trench having cinders, rubbish, rock or gravel fill, or any other material which may cause injury to or disintegration of the service lateral, unless adequate means of protection are provided by sand filling or such other insulation as may be approved by the water utility. Service laterals passing through curb or retaining walls shall be adequately safeguarded by provision of a channel space or pipe casing not less than twice the diameter of the service connection. The space between the service lateral and the channel or pipe casing shall be filled and lightly caulked with an oakum, mastic cement, or other resilient material and made impervious to moisture.

In backfilling the pipe trench, the service lateral must be protected against injury by carefully hand tamping the ground filling around the pipe. There should be at least 6 inches of ground filling over the pipe, and it should be free from hard lumps, rocks, stones, or other injurious material.

Public Service Commission of Wisconsin

Germantown Water Utility

Water Utility Operating Rules

Service Laterals (continued)

All water service laterals shall be of undiminished size from the street main into the point of meter placement. Beyond the meter outlet valve, the piping shall be sized and proportioned to provide, on all floors, at all times, an equitable distribution of the water supply for the greatest probable number of fixtures or appliances operating simultaneously.

Replacement and Repair of Service Laterals

The service lateral from the main to and through the curb stop will be maintained and kept in repair and, when worn out, replaced at the expense of the water utility. The property owner shall maintain the service lateral from the curb stop to the point of use.

If an owner fails to repair a leaking or broken service lateral from the curb to the point of metering or use within such time as may appear reasonable to the water utility after notification has been served on the owner by the water utility, the water will be shut off and will not be turned on again until the repairs have been completed.

Abandonment of Service

If a property owner changes the use of a property currently receiving water service such that water service will no longer be needed in the future, the water utility may require the abandonment of the water service at the water main. In such case, the property owner may be responsible for all removal and/or repair costs, including the water main and the utility portion of the water service lateral.

Charges for Water Wasted Due to Leaks

See Wis. Admin. Code § PSC 185.35 or Schedule X-4, if applicable.

Thawing Frozen Service Laterals

See Wis. Admin. Code § PSC 185.88 or Schedule X-4, if applicable.

Curb Stop Boxes

The curb stop box is the property of the water utility. The water utility is responsible for its repair and maintenance. This includes maintaining, through adjustment, the curb stop box at an appropriate grade level where no direct action by the property owner or occupant has contributed to an elevation problem. The property owner is responsible for protecting the curb stop box from situations that could obstruct access to it or unduly expose it to harm. The water utility shall not be liable for failure to locate the curb stop box and shut off the water in case of a leak on the owner’s premises.

EFFECTIVE: =TBD=
PSCW AUTHORIZATION: 2210-WR-106

Public Service Commission of Wisconsin

Germantown Water Utility

Water Utility Operating Rules

Installation of Meters

Meters will be owned, furnished, and installed by the water utility or a utility-approved contractor and are not to be disconnected or tampered with by the customer. All meters shall be so located that they shall be protected from obstructions and permit ready access for reading, inspection, and servicing, such location to be designated or approved by the water utility. All piping within the building must be supplied by the owner. Where additional meters are desired by the owner, the owner shall pay for all piping. Where applicable, see Schedule Am-1 for rates.

Repairs to Meters

Meters will be repaired by the water utility, and the cost of such repairs caused by ordinary wear and tear will be borne by the water utility.

Repair of any damage to a meter resulting from the carelessness of the owner of the premises, owner's agent, or tenant, or from the negligence of any one of them to properly secure and protect same, including any damage that may result from allowing a water meter to become frozen or to be damaged from the presence of hot water or steam in the meter, shall be paid for by the customer or the owner of the premises.

Service Piping for Meter Settings

Where the original service piping is installed for a new metered customer, where existing service piping is changed for the customer's convenience, or where a new meter is installed for an existing unmetered customer, the owner of the premises at his/her expense shall provide a suitable location and the proper connections for the meter. The meter setting and associated plumbing shall comply with the water utility's standards. The water utility should be consulted as to the type and size of the meter setting.

Turning on Water

The water may only be turned on for a customer by an authorized employee of the water utility. Plumbers may turn the water on to test their work, but upon completion must leave the water turned off.

Sprinkling Restrictions and Emergency Water Conditions

Where the municipality has a policy regarding sprinkling restrictions and/or emergency water conditions, failure to comply with such may result in disconnection of service.

See Wis. Admin. Code § PSC 185.37.

EFFECTIVE: =TBD=
PSCW AUTHORIZATION: 2210-WR-106

Public Service Commission of Wisconsin

Germantown Water Utility

Water Utility Operating Rules

Failure to Read Meters

Where the water utility is unable to read a meter, the fact will be plainly indicated on the bill, and either an estimated bill will be computed or the minimum charge applied. The difference shall be adjusted when the meter is again read, that is, the bill for the succeeding billing period will be computed with the gallons or cubic feet in each block of the rate schedule doubled, and credit will be given on that bill for the amount of the bill paid the preceding period. Only in unusual cases shall more than three consecutive estimated or minimum bills be rendered.

If the meter is damaged (see Surreptitious Use of Water) or fails to operate, the bill will be based on the average use during the past year, unless there is some reason why the use is not normal. If the average use cannot be properly determined, the bill will be estimated by some equitable method.

See Wis. Admin. Code § PSC 185.33.

Complaint Meter Tests

See Wis. Admin. Code § PSC 185.77.

Inspection of Premises

During reasonable hours, any officer or authorized employee of the water utility shall have the right of access to the premises supplied with service for the purpose of inspection or for the enforcement of the water utility's rules and regulations. Whenever appropriate, the water utility will make a systematic inspection of all unmetered water taps for the purpose of checking waste and unnecessary use of water.

See Wis. Stat. § 196.171.

Vacation of Premises

When premises are to be vacated, the water utility shall be notified, in writing, at once, so that it may remove the meter and shut off the water supply at the curb stop. The owner of the premises shall be liable for prosecution for any damage to the water utility's property. See "Abandonment of Service" in Schedule X-1 for further information.

Deposits for Residential Service

See Wis. Admin. Code § PSC 185.36.

Public Service Commission of Wisconsin

Germantown Water Utility

Water Utility Operating Rules

Deposits for Nonresidential Service

See Wis. Admin. Code § PSC 185.361.

Deferred Payment Agreement

See Wis. Admin. Code § PSC 185.38 or Schedule X-4, if applicable.

Dispute Procedures

See Wis. Admin. Code § PSC 185.39.

Disconnection and Refusal of Service

See Wis. Admin. Code § PSC 185.37.

The following is an example of a disconnection notice that the utility may use to provide the required notice to customers.

DISCONNECTION NOTICE

Dear Customer:

The bill enclosed with this notice includes your current charge for water utility service and your previous unpaid balance.

You have 10 days to pay the water utility service arrears or your service is subject to disconnection.

If you fail to pay the service arrears or fail to contact us within the 10 days allowed to make reasonable deferred payment arrangement or other suitable arrangement, we will proceed with disconnection action.

To avoid the inconvenience of service interruption and an additional charge of (amount) for reconnection, we urge you to pay the full arrears IMMEDIATELY AT ONE OF OUR OFFICES.

If you have entered into a Deferred Payment Agreement with us and have failed to make the deferred payments you agreed to, your service will be subject to disconnection unless you pay the entire amount due within 10 days.

If you have a reason for delaying the payment, call us and explain the situation.

Public Service Commission of Wisconsin

Germantown Water Utility

Water Utility Operating Rules

Disconnection and Refusal of Service (continued)

DISCONNECTION NOTICE (continued)

PLEASE CALL THIS TELEPHONE NUMBER, (telephone number), IMMEDIATELY IF:

1. You dispute the notice of delinquent account.
2. You have a question about your water utility service arrears.
3. You are unable to pay the full amount of the bill and are willing to enter into a deferred payment agreement with us.
4. There are any circumstances you think should be taken into consideration before service is discontinued.
5. Any resident is seriously ill.

Illness Provision: If there is an existing medical emergency in your home and you furnish the water utility with a statement signed by either a licensed Wisconsin physician or a public health official, we will delay disconnection of service up to 21 days. The statement must identify the medical emergency and specify the period of time during which disconnection will aggravate the existing emergency.

Deferred Payment Agreements: If you are a residential customer and you are unable to pay the full amount of the water utility service arrears on your bill, you may contact the water utility to discuss arrangements to pay the arrears over an extended period of time.

This time payment agreement will require:

1. Payment of a reasonable amount at the time the agreement is made.
2. Payment of the remainder of the outstanding balance in monthly installments over a reasonable length of time.
3. Payment of all future water utility service bills in full by the due date.

In any situation where you are unable to resolve billing disputes or disputes about the grounds for proposed disconnection through contacts with our water utility, you may make an appeal to the Public Service Commission of Wisconsin by calling (800) 225-7729.

(WATER UTILITY NAME)

Public Service Commission of Wisconsin

Germantown Water Utility

Water Utility Operating Rules

Collection of Overdue Bills

An amount owed by the customer may be levied as a tax as provided in Wis. Stat. § 66.0809.

Surreptitious Use of Water

When the water utility has reasonable evidence that a person is obtaining water, in whole or in part, by means of devices or methods used to stop or interfere with the proper metering of the water utility service being delivered, the water utility reserves the right to estimate and present immediately a bill for unmetered service as a result of such interference, and such bill shall be payable subject to a 24-hour disconnection of service. If the water utility disconnects the service for any such reason, the water utility will reconnect the service upon the following conditions:

- A. The customer will be required to deposit with the water utility an amount sufficient to guarantee the payment of the bills for water utility service.
- B. The customer will be required to pay the water utility for any and all damages to water utility equipment resulting from such interference with the metering.
- C. The customer must further agree to comply with reasonable requirements to protect the water utility against further losses.

See Wis. Stat. §§ 98.26 and 943.20.

Repairs to Mains

The water utility reserves the right to shut off the water supply in the mains temporarily to make repairs, alterations, or additions to the plant or system. When the circumstances will permit, the water utility will give notification, by newspaper publication or otherwise, of the discontinuance of the water supply. No credit will be allowed to customers for such temporary suspension of the water supply.

See Wis. Admin. Code § PSC 185.87.

Duty of Water Utility with Respect to Safety of the Public

It shall be the duty of the water utility to see that all open ditches for water mains, hydrants, and service laterals are properly guarded to prevent accident to any person or vehicle, and at night there shall be displayed proper signal lighting to insure the safety of the public.

Germantown Water Utility

Water Utility Operating Rules

Handling Water Mains and Service Laterals in Excavation Trenches

Contractors must call Digger’s Hotline and ensure a location is done to establish the existence and location of all water mains and service laterals as provided in Wis. Stat. § 182.0175. Where water mains or service laterals have been removed, cut, or damaged during trench excavation, the contractors must, at their own expense, cause them to be replaced or repaired at once. Contractors must not shut off the water service laterals to any customer for a period exceeding 6 hours.

Protective Devices

- A. Protective Devices in General: The owner or occupant of every premise receiving water supply shall apply and maintain suitable means of protection of the premise supply and all appliances against damage arising in any manner from the use of the water supply, variation of water pressure, or any interruption of water supply. Particularly, such owner or occupant must protect water-cooled compressors for refrigeration systems by means of high and/or low pressure safety cutout devices. There shall likewise be provided means for the prevention of the transmission of water ram or noise of operation of any valve or appliance through the piping of their own or adjacent premises.
- B. Relief Valves: On all "closed systems" (i.e., systems having a check valve, pressure regulator, reducing valve, water filter, or softener), an effective pressure relief valve shall be installed at or near the top of the hot water tank or at the hot water distribution pipe connection to the tank. No stop valve shall be placed between the hot water tank and the relief valve or on the drain pipe. See applicable plumbing codes.
- C. Air Chambers: An air chamber or approved shock absorber shall be installed at the terminus of each riser, fixture branch, or hydraulic elevator main for the prevention of undue water hammer. The air chamber shall be sized in conformance with local plumbing codes. Where possible, the air chamber should be provided at its base with a valve for water drainage and replenishment of air.

Cross-Connections

Every person owning or occupying a premise receiving municipal water supply shall maintain such municipal water supply free from any connection, either of a direct or of an indirect nature, with a water supply from a foreign source or of any manner of connection with any fixture or appliance whereby water from a foreign supply or the waste from any fixture, appliance, or waste or soil pipe may flow or be siphoned or pumped into the piping of the municipal water system.

See Wis. Admin. Code § NR 811.06.

Public Service Commission of Wisconsin

Germantown Water Utility

Water Main Extension Rule

Water mains will be extended for new customers on the following basis:

- A. Where the cost of the extension is to immediately be collected through assessment by the municipality against the abutting property, the procedure set forth under Wis. Stat. § 66.0703 will apply, and no additional customer contribution to the utility will be required.
- B. Where the municipality is unwilling or unable to make a special assessment, the extension will be made on a customer-financed basis as follows:
 - 1. The applicant(s) will advance as a contribution in aid of construction the total amount equivalent to that which would have been assessed for all property under paragraph A.
 - 2. Part of the contribution required in paragraph B.1. will be refundable. When additional customers are connected to the extended main within 10 years of the date of completion, contributions in aid of construction will be collected equal to the amount which would have been assessed under paragraph A. for the abutting property being served. This amount will be refunded to the original contributor(s). In no case will the contributions received from additional customers exceed the proportionate amount which would have been required under paragraph A., nor will it exceed the total assessable cost of the original extension.
- C. When a customer connects to a transmission main or connecting loop installed at utility expense within 10 years of the date of completion, there will be a contribution required of an amount equivalent to that which would have been assessed under paragraph A.

Public Service Commission of Wisconsin

Germantown Water Utility

Water Main Installations in Platted Subdivisions

Application for installation of water mains in regularly platted real estate development subdivisions shall be filed with the utility.

If the developer, or a contractor employed by the developer, is to install the water mains (with the approval of the utility), the developer shall be responsible for the total cost of construction.

If the utility or its contractor is to install the water mains, the developer shall be required to advance to the utility, prior to the beginning of the construction, the total estimated cost of the extension. If the final costs exceed estimated costs, an additional billing will be made for the balance of the cost due. This balance is to be paid within 30 days. If final costs are less than estimated, a refund of the overpayment will be made by the water utility.

Germantown Water Utility - Step I
Customer Water Bill Comparison at Present and Authorized Rates

Customer Type	Meter Size	Volume (1000 Gallons)	Quarterly			Quarterly Including Public Fire Protection	
			Bills at Current Rates	Bills at Step I Rates	Percent Change	Bills at Step I Rates	Percent Change
Small Residential	3/4"	6	\$ 29.01	\$ 44.25	52.53%	\$ 46.38	59.88%
Average Residential	3/4"	12	\$ 42.75	\$ 69.15	61.75%	\$ 71.28	66.74%
Large Residential	3/4"	50	\$ 129.77	\$ 226.85	74.81%	\$ 228.98	76.45%
Large Residential	3/4"	75	\$ 187.02	\$ 330.60	76.77%	\$ 332.73	77.91%
Large Residential	3/4"	100	\$ 244.27	\$ 434.35	77.82%	\$ 436.48	78.69%
Multifamily Residential	2"	300	\$ 689.84	\$ 1,219.69	76.81%	\$ 1,237.69	79.42%
Multifamily Residential	2"	450	\$ 985.34	\$ 1,759.69	78.59%	\$ 1,777.69	80.41%
Multifamily Residential	3"	325	\$ 783.64	\$ 1,366.00	74.31%	\$ 1,399.00	78.53%
Multifamily Residential	3"	675	\$ 1,473.14	\$ 2,626.00	78.26%	\$ 2,659.00	80.50%
Commercial	2"	1,100	\$ 2,235.84	\$ 4,042.69	80.81%	\$ 4,060.69	81.62%
Commercial	2"	1,500	\$ 2,903.84	\$ 5,254.69	80.96%	\$ 5,272.69	81.58%
Commercial	3"	2,900	\$ 5,286.39	\$ 9,553.00	80.71%	\$ 9,586.00	81.33%
Commercial	3"	3,000	\$ 5,453.39	\$ 9,856.00	80.73%	\$ 9,889.00	81.34%
Industrial	3"	2,000	\$ 3,783.39	\$ 6,826.00	80.42%	\$ 6,859.00	81.29%
Industrial	3"	2,200	\$ 4,117.39	\$ 7,432.00	80.50%	\$ 7,465.00	81.30%
Industrial	4"	5,000	\$ 8,853.87	\$ 15,994.00	80.64%	\$ 16,048.00	81.25%
Industrial	6"	28,600	\$ 48,412.24	\$ 87,688.00	81.13%	\$ 87,796.00	81.35%
Public Authority	1 1/2"	150	\$ 372.06	\$ 651.46	75.10%	\$ 662.11	77.96%
Public Authority	2"	125	\$ 345.09	\$ 589.69	70.88%	\$ 607.69	76.10%
Public Authority	3"	400	\$ 931.39	\$ 1,636.00	75.65%	\$ 1,669.00	79.19%
Public Authority	6"	900	\$ 2,123.24	\$ 3,700.00	74.26%	\$ 3,808.00	79.35%
Fire Protection Charge (Total)			\$ 537,429	\$ 598,884	11.43%		
Fire Protection Charge (Municipal)			\$ 537,429	\$ 537,000	-0.08%		
Fire Protection Charge (Direct)			\$ -	\$ 61,884			

Germantown Water Utility - Step II

Customer Water Bill Comparison at Present and Authorized Rates

Customer Type	Meter Size	Volume (1000 Gallons)	Quarterly			Quarterly Including Public Fire Protection		
			Bills at Step I Rates	Bills at Step II Rates	Percent Change	Bills at Step I Rates	Bills at Step II Rates	Percent Change
Small Residential	3/4"	6	\$ 44.25	\$ 47.10	6.44%	\$ 46.38	\$ 52.17	12.48%
Average Residential	3/4"	12	\$ 69.15	\$ 73.20	5.86%	\$ 71.28	\$ 78.27	9.81%
Large Residential	3/4"	50	\$ 226.85	\$ 238.50	5.14%	\$ 228.98	\$ 243.57	6.37%
Large Residential	3/4"	75	\$ 330.60	\$ 347.25	5.04%	\$ 332.73	\$ 352.32	5.89%
Large Residential	3/4"	100	\$ 434.35	\$ 456.00	4.98%	\$ 436.48	\$ 461.07	5.63%
Multifamily Residential	2"	300	\$ 1,219.69	\$ 1,306.00	7.08%	\$ 1,237.69	\$ 1,348.00	8.91%
Multifamily Residential	2"	450	\$ 1,759.69	\$ 1,894.00	7.63%	\$ 1,777.69	\$ 1,936.00	8.91%
Multifamily Residential	3"	325	\$ 1,366.00	\$ 1,458.00	6.73%	\$ 1,399.00	\$ 1,533.00	9.58%
Multifamily Residential	3"	675	\$ 2,626.00	\$ 2,830.00	7.77%	\$ 2,659.00	\$ 2,905.00	9.25%
Commercial	2"	1,100	\$ 4,042.69	\$ 4,379.00	8.32%	\$ 4,060.69	\$ 4,421.00	8.87%
Commercial	2"	1,500	\$ 5,254.69	\$ 5,695.00	8.38%	\$ 5,272.69	\$ 5,737.00	8.81%
Commercial	3"	2,900	\$ 9,553.00	\$ 10,355.00	8.40%	\$ 9,586.00	\$ 10,430.00	8.80%
Commercial	3"	3,000	\$ 9,856.00	\$ 10,684.00	8.40%	\$ 9,889.00	\$ 10,759.00	8.80%
Industrial	3"	2,000	\$ 6,826.00	\$ 7,394.00	8.32%	\$ 6,859.00	\$ 7,469.00	8.89%
Industrial	3"	2,200	\$ 7,432.00	\$ 8,052.00	8.34%	\$ 7,465.00	\$ 8,127.00	8.87%
Industrial	4"	5,000	\$ 15,994.00	\$ 17,342.00	8.43%	\$ 16,048.00	\$ 17,468.00	8.85%
Industrial	6"	28,600	\$ 87,688.00	\$ 95,172.00	8.53%	\$ 87,796.00	\$ 95,427.00	8.69%
Public Authority	1 1/2"	150	\$ 651.46	\$ 688.00	5.61%	\$ 662.11	\$ 713.32	7.73%
Public Authority	2"	125	\$ 589.69	\$ 620.00	5.14%	\$ 607.69	\$ 662.00	8.94%
Public Authority	3"	400	\$ 1,636.00	\$ 1,752.00	7.09%	\$ 1,669.00	\$ 1,827.00	9.47%
Public Authority	6"	900	\$ 3,700.00	\$ 3,976.00	7.46%	\$ 3,808.00	\$ 4,231.00	11.11%
Fire Protection Charge (Total)			\$ 598,638	\$ 683,801	14.23%			
Fire Protection Charge (Municipal)			\$ 537,000	\$ 537,000	0.00%			
Fire Protection Charge (Direct)			\$ 61,638	\$ 146,801	138.17%			

Germantown Water Utility - Step II

Customer Water Bill Comparison at Present and Authorized Rates

Customer Type	Meter Size	Volume (1000 Gallons)	Quarterly			Quarterly Including Public Fire Protection	
			Bills at Current Rates	Bills at Step II Rates	Percent Change	Bills at Step II Rates	Percent Change
Small Residential	3/4"	6	\$ 29.01	\$ 47.10	62.36%	\$ 52.17	79.83%
Average Residential	3/4"	12	\$ 42.75	\$ 73.20	71.23%	\$ 78.27	83.09%
Large Residential	3/4"	50	\$ 129.77	\$ 238.50	83.79%	\$ 243.57	87.69%
Large Residential	3/4"	75	\$ 187.02	\$ 347.25	85.68%	\$ 352.32	88.39%
Large Residential	3/4"	100	\$ 244.27	\$ 456.00	86.68%	\$ 461.07	88.75%
Multifamily Residential	2"	300	\$ 689.84	\$ 1,306.00	89.32%	\$ 1,348.00	95.41%
Multifamily Residential	2"	450	\$ 985.34	\$ 1,894.00	92.22%	\$ 1,936.00	96.48%
Multifamily Residential	3"	325	\$ 783.64	\$ 1,458.00	86.05%	\$ 1,533.00	95.63%
Multifamily Residential	3"	675	\$ 1,473.14	\$ 2,830.00	92.11%	\$ 2,905.00	97.20%
Commercial	2"	1,100	\$ 2,235.84	\$ 4,379.00	95.85%	\$ 4,421.00	97.73%
Commercial	2"	1,500	\$ 2,903.84	\$ 5,695.00	96.12%	\$ 5,737.00	97.57%
Commercial	3"	2,900	\$ 5,286.39	\$ 10,355.00	95.88%	\$ 10,430.00	97.30%
Commercial	3"	3,000	\$ 5,453.39	\$ 10,684.00	95.91%	\$ 10,759.00	97.29%
Industrial	3"	2,000	\$ 3,783.39	\$ 7,394.00	95.43%	\$ 7,469.00	97.42%
Industrial	3"	2,200	\$ 4,117.39	\$ 8,052.00	95.56%	\$ 8,127.00	97.38%
Industrial	4"	5,000	\$ 8,853.87	\$ 17,342.00	95.87%	\$ 17,468.00	97.29%
Industrial	6"	28,600	\$ 48,412.24	\$ 95,172.00	96.59%	\$ 95,427.00	97.11%
Public Authority	1 1/2"	150	\$ 372.06	\$ 688.00	84.92%	\$ 713.32	91.72%
Public Authority	2"	125	\$ 345.09	\$ 620.00	79.66%	\$ 662.00	91.83%
Public Authority	3"	400	\$ 931.39	\$ 1,752.00	88.11%	\$ 1,827.00	96.16%
Public Authority	6"	900	\$ 2,123.24	\$ 3,976.00	87.26%	\$ 4,231.00	99.27%
Fire Protection Charge (Total)			\$ 537,429	\$ 683,801	27.24%		
Fire Protection Charge (Municipal)			\$ 537,429	\$ 537,000	-0.08%		
Fire Protection Charge (Direct)			\$ -	\$ 146,801			

Germantown Water Utility - Step I

**Schedule of Water Depreciation Rates
Effective January 1, 2020**

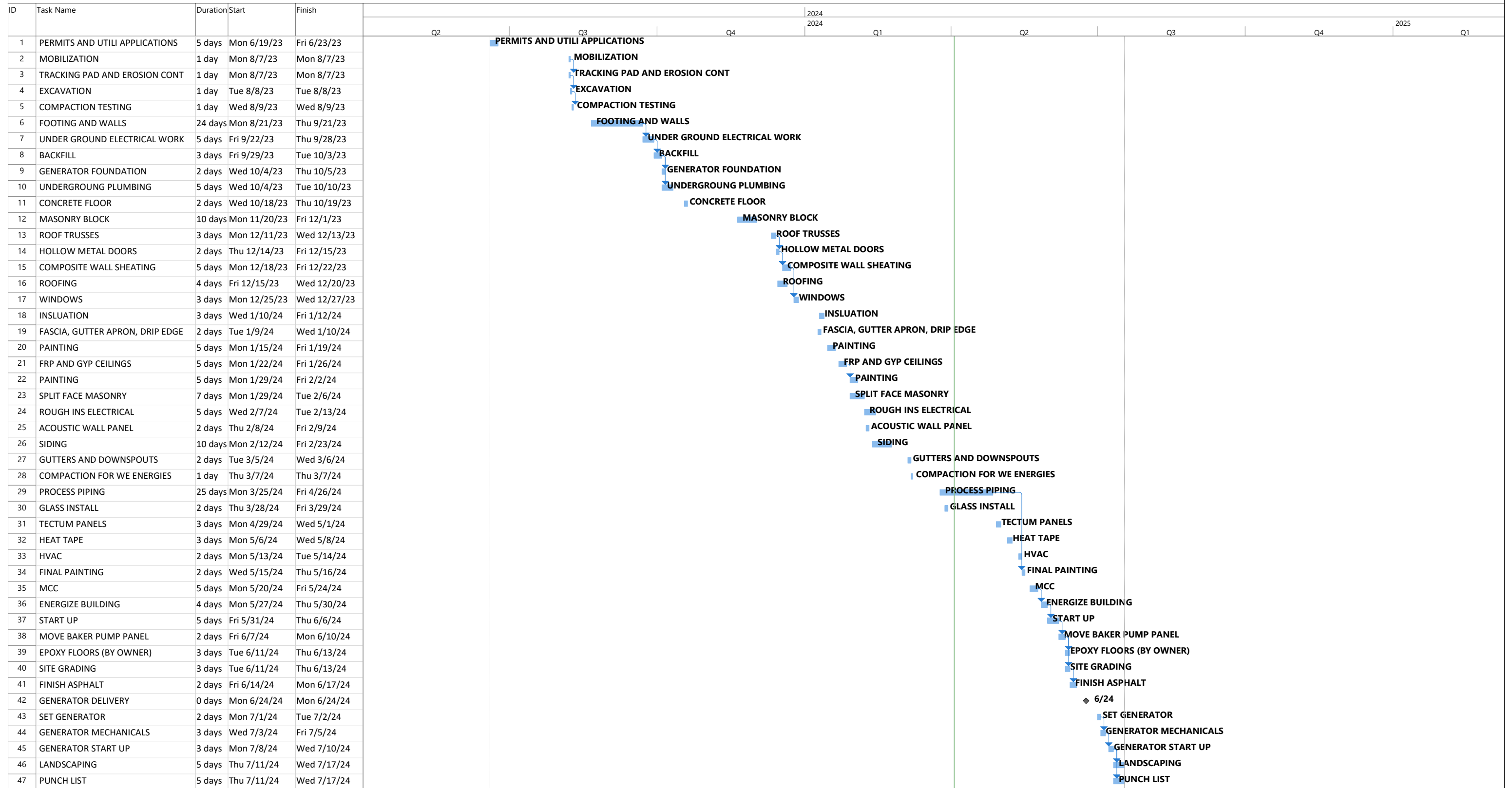
Account Number	Account Title	Depreciation Rate
	SOURCE OF SUPPLY PLANT	
311	Structures and Improvements	3.20%
314	Wells and Springs	2.90%
	PUMPING PLANT	
321	Structures and Improvements	3.20%
323	Other Power Production Equipment	4.40%
325	Electric Pumping Equipment	4.40%
328	Other Pumping Equipment	4.40%
	WATER TREATMENT PLANT	
331	Structures and Improvements	3.20%
334	Other Water Treatment Equipment	6.00%
	TRANSMISSION AND DISTRIBUTION PLANT	
341	Structures and Improvements	3.20%
342	Distribution Reservoirs and Standpipes	1.90%
343	Transmission and Distribution Mains	1.30%
345	Services	2.90%
346	Meters	5.50%
348	Hydrants	2.20%
349	Other Transmission and Distribution Plant	5.00%
	GENERAL PLANT	
390	Structures and Improvements	2.90%
391	Office Furniture and Equipment	5.80%
391.1	Computer Equipment	26.70%
392	Transportation Equipment	13.30%
394	Tools, Shop and Garage Equipment	5.80%
395	Laboratory Equipment	5.80%
396	Power Operated Equipment	7.50%
397	Communication Equipment	15.00%
397.1	SCADA Equipment	9.20%
398	Miscellaneous Equipment	5.80%

Germantown Water Utility - Step II

**Schedule of Water Depreciation Rates
Effective January 1, 2020**

Account Number	Account Title	Depreciation Rate
	SOURCE OF SUPPLY PLANT	
311	Structures and Improvements	3.20%
314	Wells and Springs	2.90%
	PUMPING PLANT	
321	Structures and Improvements	3.20%
323	Other Power Production Equipment	4.40%
325	Electric Pumping Equipment	4.40%
328	Other Pumping Equipment	4.40%
	WATER TREATMENT PLANT	
331	Structures and Improvements	3.20%
334	Other Water Treatment Equipment	6.00%
	TRANSMISSION AND DISTRIBUTION PLANT	
341	Structures and Improvements	3.20%
342	Distribution Reservoirs and Standpipes	1.90%
343	Transmission and Distribution Mains	1.30%
345	Services	2.90%
346	Meters	5.50%
348	Hydrants	2.20%
349	Other Transmission and Distribution Plant	5.00%
	GENERAL PLANT	
390	Structures and Improvements	2.90%
391	Office Furniture and Equipment	5.80%
391.1	Computer Equipment	26.70%
392	Transportation Equipment	13.30%
394	Tools, Shop and Garage Equipment	5.80%
395	Laboratory Equipment	5.80%
396	Power Operated Equipment	7.50%
397	Communication Equipment	15.00%
397.1	SCADA Equipment	9.20%
398	Miscellaneous Equipment	5.80%

GOLDENDALE ROAD WATER BOOSTER STATION



MIKE KOENIG CONSTRUCTION

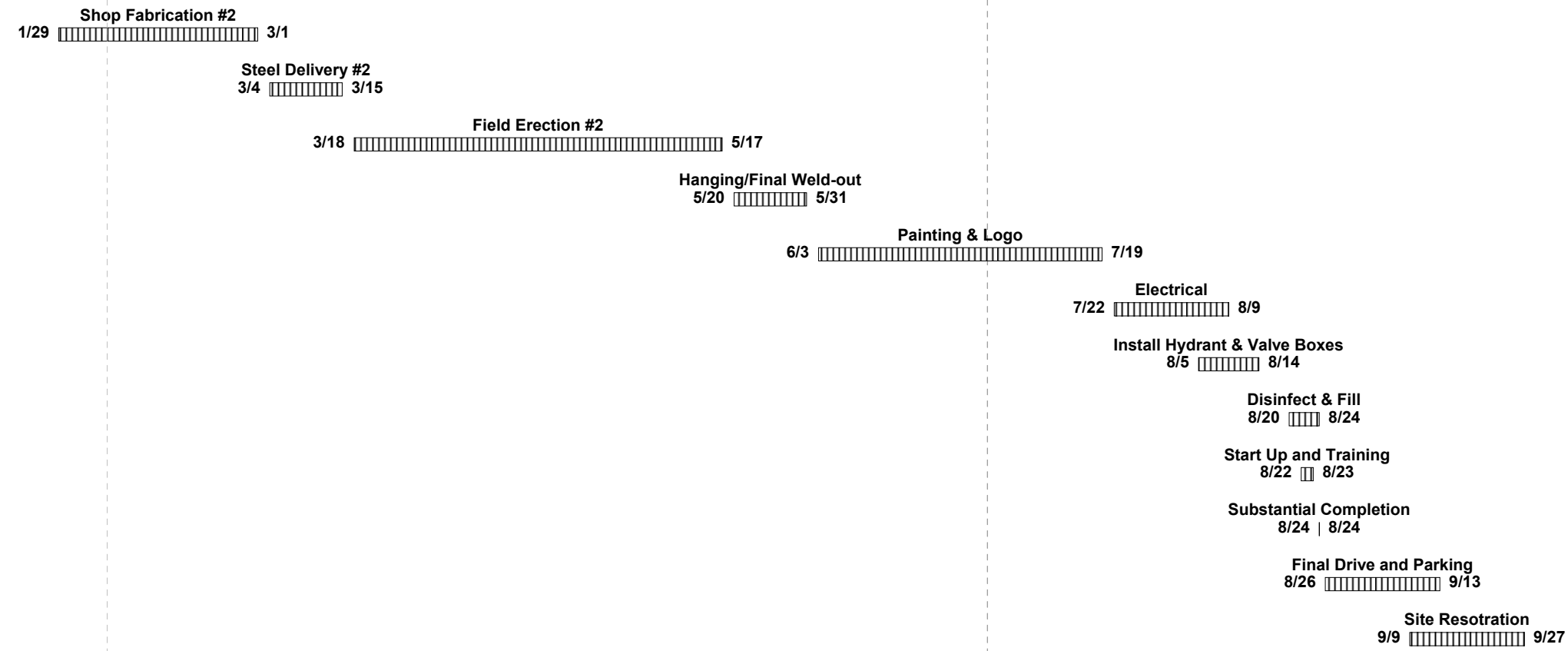
Project Manager: Nick Kelly
 Phone : 920-740-6321
 Email : nick@mikekoenigconstruction.com



**MAGUIRE IRON, INC.
GERMANTOWN, WI
500MG
ELEVATED WATER STORAGE TANK**

UPDATED: 2/6/2024

ID	Task Name	Start	Finish	Half 1, 2024							Half 2, 2024				
				J	F	M	A	M	J	J	A	S	O		
1	Steel Receipt	Mon 11/23/20	Fri 1/1/21												
2	Insurance/Bonds/Drawings	Mon 12/14/20	Tue 2/2/21												
3	Shop Fabrication	Mon 2/8/21	Fri 5/21/21												
4	Site Clearing and Entrance	Mon 3/15/21	Fri 4/9/21												
5	Foundation & Piping	Mon 4/26/21	Fri 5/14/21												
6	Site Piping	Mon 5/17/21	Fri 5/28/21												
7	Steel Delivery	Wed 5/19/21	Fri 6/18/21												
8	Field Erection	Mon 6/7/21	Fri 9/10/21												
9	Shop Fabrication #2	Mon 1/29/24	Fri 3/1/24												
10	Steel Delivery #2	Mon 3/4/24	Fri 3/15/24												
11	Field Erection #2	Mon 3/18/24	Fri 5/17/24												
12	Hanging/Final Weld-out	Mon 5/20/24	Fri 5/31/24												
13	Painting & Logo	Mon 6/3/24	Fri 7/19/24												
14	Electrical	Mon 7/22/24	Fri 8/9/24												
15	Install Hydrant & Valve Boxes	Mon 8/5/24	Wed 8/14/24												
16	Disinfect & Fill	Tue 8/20/24	Sat 8/24/24												
17	Start Up and Training	Thu 8/22/24	Fri 8/23/24												
18	Substantial Completion	Sat 8/24/24	Sat 8/24/24												
19	Final Drive and Parking	Mon 8/26/24	Fri 9/13/24												
20	Site Resotration	Mon 9/9/24	Fri 9/27/24												



Project: Germantown, WI Liquidated Damages: \$200 Substantial Completion: 8/24/2024	Task		Rolled Up Progress		Inactive Task		Manual Summary Rollup		Deadline
	Milestone		Split		Inactive Milestone		Manual Summary		Manual Progress
	Summary		External Tasks		Inactive Summary		Start-only		Manual Progress
	Rolled Up Task		Project Summary		Manual Task		Finish-only		Manual Progress
	Rolled Up Milestone		Group By Summary		Duration-only		Progress		Manual Progress

These items could be impaired by weather conditions or road restrictions.

	Utility Name	County	Utility Class	Minimum Quarterly Bill (0.625 inch meter)	6000 GAL	12000 GAL	15000 GAL	18750 GAL	75000 GAL	Effective Date
1	Brookfield Tn Of Sanitary Dist No 4	Waukesha	C	\$ 30.30	\$ 40.98	\$ 51.66	\$ 57.00	\$ 63.68	\$ 163.80	9/21/2023
2	Grafton Water and Wastewater Utility	Ozaukee	AB	\$ 20.86	\$ 36.94	\$ 53.02	\$ 61.06	\$ 71.11	\$ 221.86	3/20/2018
3	Dousman Water Utility	Waukesha	D	\$ 24.00	\$ 40.50	\$ 57.00	\$ 65.25	\$ 75.56	\$ 220.25	9/30/2015
4	City of West Bend Water Utility	Washington	AB	\$ 21.00	\$ 39.16	\$ 57.32	\$ 66.40	\$ 77.75	\$ 248.00	4/1/2021
5	Village of Jackson Water Utility	Washington	C	\$ 25.53	\$ 43.05	\$ 60.57	\$ 69.33	\$ 80.28	\$ 218.43	10/1/2023
6	Fredonia Municipal Water Utility	Ozaukee	D	\$ 20.36	\$ 40.58	\$ 60.80	\$ 70.91	\$ 83.55	\$ 273.11	1/1/2024
7	Brown Deer Water Public Utility	Ozaukee	C	\$ 23.71	\$ 42.43	\$ 61.15	\$ 70.51	\$ 82.21	\$ 254.96	12/1/2023
8	Village of Menomonee Falls Water Utility	Waukesha	AB	\$ 11.52	\$ 37.38	\$ 63.24	\$ 76.17	\$ 92.33	\$ 309.97	1/1/2017
9	Allenton Sanitary District No 1	Washington	D	\$ 18.81	\$ 41.19	\$ 63.57	\$ 74.76	\$ 88.75	\$ 285.06	12/8/2022
10	Brookfield Municipal Water Utility	Waukesha	AB	\$ 20.31	\$ 44.01	\$ 68.73	\$ 82.11	\$ 98.84	\$ 365.01	12/1/2023
11	Village of Pewaukee Water Utility	Waukesha	C	\$ 24.00	\$ 46.38	\$ 68.76	\$ 79.95	\$ 93.94	\$ 300.50	3/1/2022
12	Germantown Water Utility	Washington	AB	\$ 19.35	\$ 44.25	\$ 69.15	\$ 81.60	\$ 97.16	\$ 330.60	1/1/2022
13	City of Muskego Water Public Utility	Waukesha	C	\$ 27.82	\$ 49.36	\$ 70.90	\$ 81.67	\$ 95.13	\$ 276.82	1/1/2021
14	Kewaskum Municipal Water Utility	Washington	C	\$ 33.36	\$ 52.74	\$ 72.12	\$ 81.81	\$ 93.92	\$ 266.11	12/1/2023
15	Hartland Municipal Water Utility	Waukesha	C	\$ 28.70	\$ 51.14	\$ 73.58	\$ 84.80	\$ 98.83	\$ 273.65	12/16/2023
16	Slinger Utilities	Washington	C	\$ 25.08	\$ 50.16	\$ 75.24	\$ 87.78	\$ 103.46	\$ 319.86	1/2/2023
17	Saukville Municipal Water Utility	Ozaukee	C	\$ 29.59	\$ 52.87	\$ 76.15	\$ 87.79	\$ 102.34	\$ 297.49	1/1/2024
18	City of Oconomowoc Utilities	Waukesha	AB	\$ 27.00	\$ 52.20	\$ 77.40	\$ 90.00	\$ 105.75	\$ 342.00	9/1/2021
19	Village of Eagle Municipal Water Utility	Waukesha	D	\$ 33.00	\$ 56.40	\$ 79.80	\$ 91.50	\$ 106.13	\$ 307.50	1/1/2012
20	Cedarburg Light And Water Commission	Ozaukee	AB	\$ 33.30	\$ 58.50	\$ 83.70	\$ 96.30	\$ 112.05	\$ 348.30	4/1/2023
21	New Berlin Water Utility	Waukesha	AB	\$ 21.00	\$ 53.70	\$ 86.40	\$ 102.75	\$ 123.19	\$ 424.95	4/1/2024
22	City of Pewaukee Water Utility	Waukesha	C	\$ 30.00	\$ 58.50	\$ 87.00	\$ 101.25	\$ 119.06	\$ 386.25	3/1/2024
23	Belgium Municipal Water Utility	Ozaukee	D	\$ 30.93	\$ 59.85	\$ 88.77	\$ 103.23	\$ 121.31	\$ 392.43	9/15/2023
24	Delafield Municipal Water Utility	Waukesha	D	\$ 50.00	\$ 69.50	\$ 89.00	\$ 98.75	\$ 110.94	\$ 293.75	12/21/1998
25	Mukwonago Municipal Water Utility	Waukesha	C	\$ 33.95	\$ 63.65	\$ 93.35	\$ 108.20	\$ 126.76	\$ 387.20	1/6/2022
26	Village of Sussex Water Public Utility	Waukesha	C	\$ 39.00	\$ 66.30	\$ 93.60	\$ 107.25	\$ 124.31	\$ 380.25	12/26/2019
27	Mequon Municipal Water Utility	Ozaukee	AB	\$ 31.32	\$ 63.06	\$ 94.80	\$ 110.67	\$ 130.51	\$ 428.07	12/18/2023
28	City of Hartford Utilities	Washington	AB	\$ 40.50	\$ 70.20	\$ 99.90	\$ 114.75	\$ 133.31	\$ 411.45	1/8/2011
29	Lannon Municipal Water Utility	Waukesha	D	\$ 36.00	\$ 69.24	\$ 102.48	\$ 119.10	\$ 139.88	\$ 451.50	10/1/2023
30	Butler Public Water Utility	Waukesha	D	\$ 36.04	\$ 69.58	\$ 103.12	\$ 119.89	\$ 140.85	\$ 425.29	6/1/2023
31	Port Washington Municipal Water Utility	Ozaukee	AB	\$ 27.00	\$ 73.16	\$ 119.32	\$ 142.40	\$ 171.25	\$ 582.40	9/1/2023
32	City of Waukesha Water Utility	Waukesha	AB	\$ 48.00	\$ 82.92	\$ 123.09	\$ 145.80	\$ 174.19	\$ 695.22	10/1/2023
	Average				\$ 53.75	\$ 78.90	\$ 91.59	\$ 107.45	\$ 340.06	